

Anti-PRL antibody (100-227 aa) [ABT-PRL] (STJ196774)

STJ196774

GENERAL INFORMATION

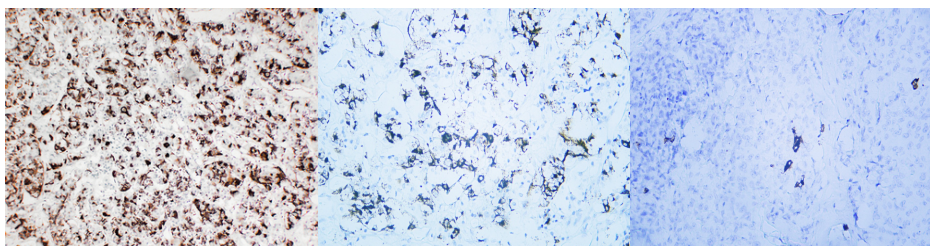
Product Type	Primary antibodies
Short Description	Mouse monoclonal antibody anti-Prolactin (100-227 aa) is suitable for use in Immunohistochemistry and Immunofluorescence research applications.
Applications	IHC/IF
Host/Source	Mouse
Reactivity	Human

PRODUCT PROPERTIES

Clonality	Monoclonal
Clone ID	ABT-PRL
Concentration	
Conjugation	Unconjugated
Purification	The antibody was affinity-purified from mouse ascites by affinity-chromatography using specific immunogen.
Dilution Range	IHC-P 1:100-500 IF 1:50-200
Formulation	Liquid in PBS containing 50% Glycerol, 0.5% BSA and 0.02% Sodium Azide.
Isotype	IgG1k
Storage	Store at -20°C for up to 1 year from the date of receipt, and avoid repeat freeze-thaw cycles.
Instruction	

TARGET INFORMATION

Gene ID	5617
Gene Symbol	PRL
Uniprot ID	PRL_HUMAN
Immunogen	Synthesized peptide derived from the human Prolactin at the amino acid range 100-227
Immunogen Region	100-227 aa
Specificity	This antibody detects endogenous levels of human Prolactin. Heat-induced epitope retrieval (HIER) TRIS-EDTA of pH8.0 was highly recommended as antigen repair method in paraffin section
Immunogen Sequence	



Human pituitary adenoma tissue was stained with Anti-Prolactin (ABT-PRL) Antibody

Human pituitary adenoma tissue was stained with Anti-Prolactin (ABT-PRL) Antibody

Human pituitary adenoma tissue was stained with Anti-Prolactin (ABT-PRL) Antibody

This product is suitable for in-vitro studies under the RESEARCH USE ONLY [RUO] licence. This product must not be used as for diagnostic or other medical purposes.
St John's Laboratory Ltd, Knowledge Dock Business Centre, University Way, London, E16 2RD | Tel: 0208 223 3081