

Anti-hCG antibody (25-100 aa) [ABT-HCG] (STJ196767)

STJ196767

GENERAL INFORMATION

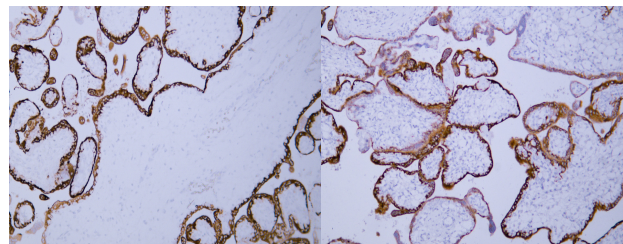
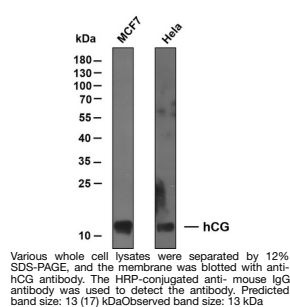
| | |
|--------------------------|--|
| Product Type | Primary antibodies |
| Short Description | Mouse monoclonal antibody anti-Glycoprotein hormones alpha chain (25-100 aa) is suitable for use in Immunohistochemistry and Western Blot research applications. |
| Applications | IHC/WB |
| Host/Source | Mouse |
| Reactivity | Human/Mouse/Rat |

PRODUCT PROPERTIES

| | |
|----------------------|--|
| Clonality | Monoclonal |
| Clone ID | ABT-HCG |
| Concentration | |
| Conjugation | Unconjugated |
| Purification | The antibody was affinity-purified from mouse ascites by affinity-chromatography using specific immunogen. |
| Dilution | IHC-P 1:100-500 |
| Range | WB 1:200-1000 |
| Formulation | Liquid in PBS containing 50% Glycerol, 0.5% BSA and 0.02% Sodium Azide. |
| Isotype | IgG2ak |
| Storage | Store at -20°C for up to 1 year from the date of receipt, and avoid repeat freeze-thaw cycles. |
| Instruction | |

TARGET INFORMATION

| | |
|---------------------------|---|
| Gene ID | 1081 |
| Gene Symbol | CGA |
| Uniprot ID | GLHA_HUMAN |
| Immunogen | Synthesized peptide derived from the human hCG at the amino acid range 25-100 |
| Immunogen Region | 25-100 aa |
| Specificity | This antibody detects endogenous levels of human hCG. Heat-induced epitope retrieval (HIER) TRIS-EDTA of pH8.0 was highly recommended as antigen repair method in paraffin section. The antibody was also |
| Immunogen Sequence | |



Human placenta tissue was stained with Anti-hCG $\bar{\alpha}$ (ABT-HCG) Antibody

Human placenta tissue was stained with Anti-hCG $\bar{\alpha}$ (ABT-HCG) Antibody

This product is suitable for in-vitro studies under the RESEARCH USE ONLY [RUO] licence. This product must not be used as for diagnostic or other medical purposes.
St John's Laboratory Ltd, Knowledge Dock Business Centre, University Way, London, E16 2RD | Tel: 0208 223 3081