

Anti-Glucagon antibody (2-100 aa) [PT1696] (STJ196766)

STJ196766

GENERAL INFORMATION

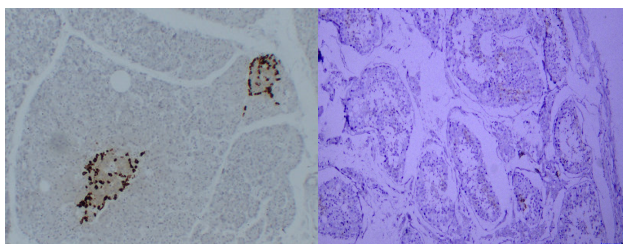
Product Type	Primary antibodies
Short Description	Mouse monoclonal antibody anti-Pro-glucagon (2-100 aa) is suitable for use in Immunohistochemistry and Immunofluorescence research applications.
Applications	IHC/IF
Host/Source	Mouse
Reactivity	Human

PRODUCT PROPERTIES

Clonality	Monoclonal
Clone ID	PT1696
Concentration	
Conjugation	Unconjugated
Purification	The antibody was affinity-purified from mouse ascites by affinity-chromatography using specific immunogen.
Dilution Range	IHC-P 1:100-500 IF 1:50-200
Formulation	Liquid in PBS containing 50% Glycerol, 0.5% BSA and 0.02% Sodium Azide.
Isotype	IgG2bk
Storage	Store at -20°C for up to 1 year from the date of receipt, and avoid repeat freeze-thaw cycles.
Instruction	

TARGET INFORMATION

Gene ID	2641
Gene Symbol	GCG
Uniprot ID	GLUC_HUMAN
Immunogen	Synthesized peptide derived from the human Glucagon at the amino acid range 2-100
Immunogen Region	2-100 aa
Specificity	This antibody detects endogenous levels of human Glucagon. Heat-induced epitope retrieval (HIER) Citrate buffer of pH6.0 was highly recommended as antigen repair method in paraffin section
Immunogen Sequence	



Immunohistochemical analysis of paraffin-embedded Pancreatic carcinoma. 1, Antibody was diluted at 1:200 (4Å°C overnight). 2, Citric acid, pH6.0 was used for antigen retrieval. 3, Secondary antibody was diluted at 1:200 (room temperature, 30min).

Immunohistochemical analysis of paraffin-embedded human testis Antibody was diluted at 1:200 (4Å°C overnight).

This product is suitable for in-vitro studies under the RESEARCH USE ONLY [RUO] licence. This product must not be used as for diagnostic or other medical purposes.
St John's Laboratory Ltd, Knowledge Dock Business Centre, University Way, London, E16 2RD | Tel: 0208 223 3081