

## Anti-FLI1 antibody (300-400 aa) [ABT-FLI1] (STJ196763)

STJ196763

### GENERAL INFORMATION

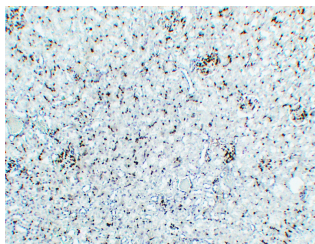
<b>Product Type</b>	Primary antibodies
<b>Short Description</b>	Mouse monoclonal antibody anti-Friend leukemia integration 1 transcription factor (300-400 aa) is suitable for use in Western Blot, Immunohistochemistry and Immunofluorescence research applications.
<b>Applications</b>	WB/IHC/IF
<b>Host/Source</b>	Mouse
<b>Reactivity</b>	Human

### PRODUCT PROPERTIES

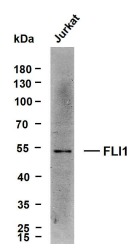
<b>Clonality</b>	Monoclonal
<b>Clone ID</b>	ABT-FLI1
<b>Concentration</b>	
<b>Conjugation</b>	Unconjugated
<b>Purification</b>	The antibody was affinity-purified from mouse ascites by affinity-chromatography using specific immunogen.
<b>Dilution</b>	IHC-P 1:100-500
<b>Range</b>	WB 1:100-2000 IF 1:50-200
<b>Formulation</b>	Liquid in PBS containing 50% Glycerol, 0.5% BSA and 0.02% Sodium Azide.
<b>Isotype</b>	IgG1k
<b>Storage Instruction</b>	Store at -20°C for up to 1 year from the date of receipt, and avoid repeat freeze-thaw cycles.

### TARGET INFORMATION

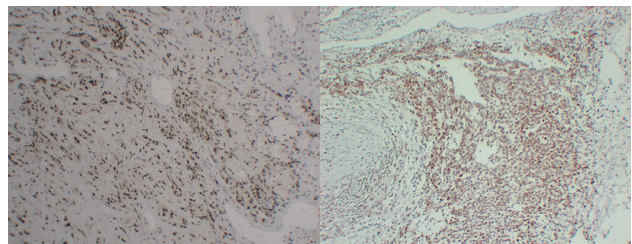
<b>Gene ID</b>	2313
<b>Gene Symbol</b>	FLI1
<b>Uniprot ID</b>	FLI1_HUMAN
<b>Immunogen</b>	Synthesized peptide derived from the human FLI1 at the amino acid range 300-400
<b>Immunogen Region</b>	300-400 aa
<b>Specificity</b>	This antibody detects endogenous levels of human FLI1. Heat-induced epitope retrieval (HIER) TRIS-EDTA of pH8.0 was highly recommended as antigen repair method in paraffin section
<b>Immunogen Sequence</b>	



mouse kidney tissue was stained with Anti-FLI1/ERG (ABT-FLI1) Antibody



Whole cell lysates were separated by 10% SDS-PAGE, and the membrane was probed with anti-FLI1/ERG (ABT-FLI1) antibody. The HRP-conjugated Goat anti-mouse IgG (H + L) antibody was used to detect the antibody. Lane 1: Jurkat. Predicted band size: 51kDa. Observed band size: 51kDa.



Immunohistochemical analysis of paraffin-embedded Hemangioperithelioma. 1. Antibody was diluted at 1:200 (4°C overnight). 2. Tris-EDTA, pH8.0 was used for antigen retrieval. 3. Secondary antibody was diluted at 1:200 (room temperature, 30min).

Immunohistochemical analysis of paraffin-embedded PNET. 1. Antibody was diluted at 1:200 (4°C overnight). 2. Tris-EDTA, pH8.0 was used for antigen retrieval. 3. Secondary antibody was diluted at 1:200 (room temperature, 30min).

This product is suitable for in-vitro studies under the RESEARCH USE ONLY [RUO] licence. This product must not be used as for diagnostic or other medical purposes.  
St John's Laboratory Ltd, Knowledge Dock Business Centre, University Way, London, E16 2RD | Tel: 0208 223 3081