

Anti-EPCAM antibody (100-200 aa) [ABT-EPCAM] (STJ196761)

STJ196761

GENERAL INFORMATION

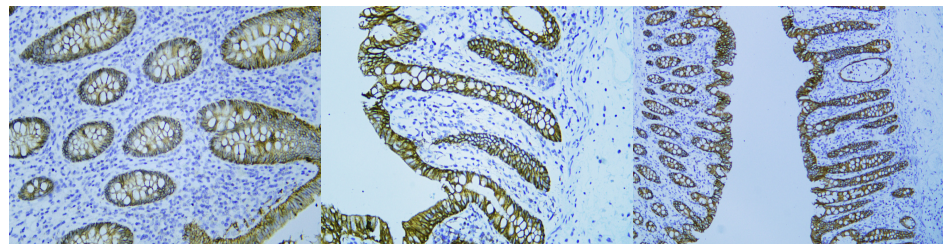
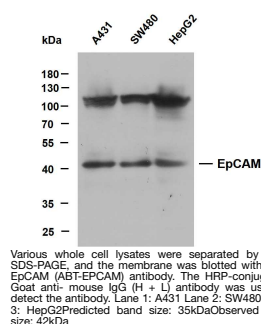
Product Type	Primary antibodies
Short Description	Mouse monoclonal antibody anti-Epithelial cell adhesion molecule (100-200 aa) is suitable for use in Western Blot, Immunohistochemistry and Immunofluorescence research applications.
Applications	WB/IHC/IF
Host/Source	Mouse
Reactivity	Human

PRODUCT PROPERTIES

Clonality	Monoclonal
Clone ID	ABT-EPCAM
Concentration	
Conjugation	Unconjugated
Purification	The antibody was affinity-purified from mouse ascites by affinity-chromatography using specific immunogen.
Dilution Range	IHC-P 1:100-500 WB 1:100-2000 IF 1:50-200
Formulation	Liquid in PBS containing 50% Glycerol, 0.5% BSA and 0.02% Sodium Azide.
Isotype	IgG2bk
Storage	Store at -20°C for up to 1 year from the date of receipt, and avoid repeat freeze-thaw cycles.
Instruction	

TARGET INFORMATION

Gene ID	4072
Gene Symbol	EPCAM
Uniprot ID	EPCAM_HUMAN
Immunogen	Synthesized peptide derived from the human Ep-CAM at the amino acid range 100-200
Immunogen Region	100-200 aa
Specificity	This antibody detects endogenous levels of human Ep-CAM. Heat-induced epitope retrieval (HIER) Citrate buffer of pH6.0 was highly recommended as antigen repair method in paraffin section
Immunogen Sequence	



Human appendix tissue was stained with Anti-EpCAM (ABT-EPCAM) Antibody

Human colon tissue was stained with Anti-EpCAM (ABT-EPCAM) Antibody

Human colon tissue was stained with Anti-EpCAM (ABT-EPCAM) Antibody

This product is suitable for in-vitro studies under the RESEARCH USE ONLY [RUO] licence. This product must not be used as for diagnostic or other medical purposes.
St John's Laboratory Ltd, Knowledge Dock Business Centre, University Way, London, E16 2RD | Tel: 0208 223 3081