

Anti-KRT4 antibody (400-534 aa) [ABT-CK4] (STJ196758)

STJ196758

GENERAL INFORMATION

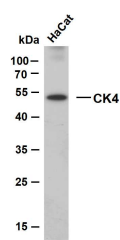
Product Type	Primary antibodies
Short Description	Mouse monoclonal antibody anti-Keratin, type II cytoskeletal 4 (400-534 aa) is suitable for use in Immunohistochemistry and Western Blot research applications.
Applications	IHC/WB
Host/Source	Mouse
Reactivity	Human

PRODUCT PROPERTIES

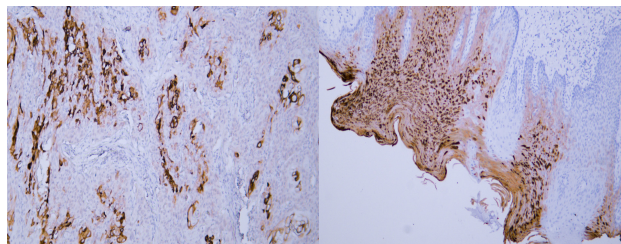
Clonality	Monoclonal
Clone ID	ABT-CK4
Concentration	
Conjugation	Unconjugated
Purification	The antibody was affinity-purified from mouse ascites by affinity-chromatography using specific immunogen.
Dilution	WB 500-2000
Range	IHC-P 1:100-500
Formulation	Liquid in PBS containing 50% Glycerol, 0.5% BSA and 0.02% Sodium Azide.
Isotype	IgG2ak
Storage	Store at -20°C for up to 1 year from the date of receipt, and avoid repeat freeze-thaw cycles.
Instruction	

TARGET INFORMATION

Gene ID	3851
Gene Symbol	KRT4
Uniprot ID	K2C4_HUMAN
Immunogen	Synthesized peptide derived from the human Cytokeratin 4 at the amino acid range 400-534
Immunogen Region	400-534 aa
Specificity	This antibody detects endogenous levels of human Cytokeratin 4. Heat-induced epitope retrieval (HIER) Citrate buffer of pH6.0 was highly recommended as antigen repair method in paraffin section
Immunogen Sequence	



HaCat whole cell lysates were separated by 10% SDS-PAGE, and the membrane was blotted with anti-CK4 (ABT-CK4) antibody. The HRP-conjugated Goat anti-mouse IgG (H + L) antibody was used to detect the antibody. Lane 1: HaCat Predicted band size: 57kDa Observed band size: 54kDa



Human cervical squamous cell carcinoma tissue was stained with Anti-Cytokeratin 4 (ABT-CK4) Antibody

Human oral squamous cell carcinoma tissue was stained with Anti-Cytokeratin 4 (ABT-CK4) Antibody

This product is suitable for in-vitro studies under the RESEARCH USE ONLY [RUO] licence. This product must not be used as for diagnostic or other medical purposes.
St John's Laboratory Ltd, Knowledge Dock Business Centre, University Way, London, E16 2RD | Tel: 0208 223 3081