

Anti-CEACAM5 antibody (600-702 aa) [ABT-CEA] (STJ196753)

STJ196753

GENERAL INFORMATION

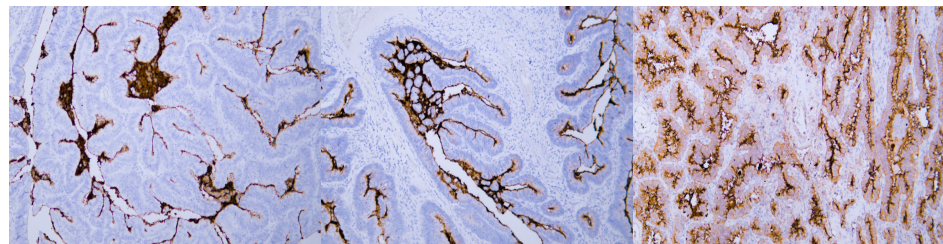
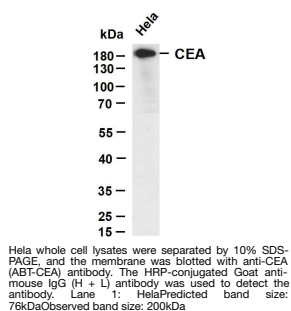
| | |
|--------------------------|---|
| Product Type | Primary antibodies |
| Short Description | Mouse monoclonal antibody anti-Carcinoembryonic antigen-related cell adhesion molecule 5 (600-702 aa) is suitable for use in Immunohistochemistry, Western Blot and Immunofluorescence research applications. |
| Applications | IHC/WB/IF |
| Host/Source | Mouse |
| Reactivity | Human |

PRODUCT PROPERTIES

| | |
|----------------------------|--|
| Clonality | Monoclonal |
| Clone ID | ABT-CEA |
| Concentration | |
| Conjugation | Unconjugated |
| Purification | The antibody was affinity-purified from mouse ascites by affinity-chromatography using specific immunogen. |
| Dilution | IHC-P 1:100-500 |
| Range | WB 1:200-1000 IF 1:50-200 |
| Formulation | Liquid in PBS containing 50% Glycerol, 0.5% BSA and 0.02% Sodium Azide. |
| Isotype | IgG2bk |
| Storage Instruction | Store at -20°C for up to 1 year from the date of receipt, and avoid repeat freeze-thaw cycles. |

TARGET INFORMATION

| | |
|---------------------------|--|
| Gene ID | 1048 |
| Gene Symbol | CEACAM5 |
| Uniprot ID | CEAM5_HUMAN |
| Immunogen | Synthesized peptide derived from the human carcinoembryonic antigen (CEA) at the amino acid range 600-702 |
| Immunogen Region | 600-702 aa |
| Specificity | This antibody detects endogenous levels of human carcinoembryonic antigen (CEA). Antibody is negative with no cross reaction to BGP or NCA. Heat-induced epitope retrieval (HIER) TRIS-EDTA of pH8.0 was |
| Immunogen Sequence | |



Human colon carcinoma tissue was stained with anti-CEA (ABT-CEA) antibody.

Human colon carcinoma tissue was stained with anti-CEA (ABT-CEA) antibody.

Human lung adenocarcinoma tissue was stained with anti-CEA (ABT-CEA) antibody.

This product is suitable for in-vitro studies under the RESEARCH USE ONLY [RUO] licence. This product must not be used as for diagnostic or other medical purposes.
St John's Laboratory Ltd, Knowledge Dock Business Centre, University Way, London, E16 2RD | Tel: 0208 223 3081