

Anti-CLDN18 antibody (150-261 aa) [ABT158] (STJ196730)

STJ196730

GENERAL INFORMATION

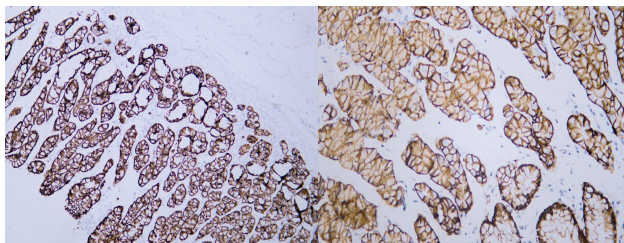
Product Type	Primary antibodies
Short Description	Mouse monoclonal antibody anti-Claudin-18 (150-261 aa) is suitable for use in Immunohistochemistry and Immunofluorescence research applications.
Applications	IHC/IF
Host/Source	Mouse
Reactivity	Human

PRODUCT PROPERTIES

Clonality	Monoclonal
Clone ID	ABT158
Concentration	
Conjugation	Unconjugated
Purification	The antibody was affinity-purified from mouse ascites by affinity-chromatography using specific immunogen.
Dilution Range	IHC-P 1:100-500 IF 1:100-500
Formulation	Liquid in PBS containing 50% Glycerol, 0.5% BSA and 0.02% Sodium Azide.
Isotype	
Storage	Store at -20°C for up to 1 year from the date of receipt, and avoid repeat freeze-thaw cycles.
Instruction	

TARGET INFORMATION

Gene ID	51208
Gene Symbol	CLDN18
Uniprot ID	CLD18_HUMAN
Immunogen	Synthesized peptide derived from the human Claudin 18 at the amino acid range 150-261
Immunogen	150-261 aa
Region	
Specificity	The antibody can specifically recognize both human Claudin 18.1 and Claudin 18.2 protein.
Immunogen	
Sequence	



Human stomach tissue was stained with Anti-Claudin 18 (ABT158) Antibody

Human stomach tissue was stained with Anti-Claudin 18 (ABT158) Antibody

This product is suitable for in-vitro studies under the RESEARCH USE ONLY [RUO] licence. This product must not be used as for diagnostic or other medical purposes.
St John's Laboratory Ltd, Knowledge Dock Business Centre, University Way, London, E16 2RD | Tel: 0208 223 3081