

Anti-PMS2 antibody (600-700 aa) [PT2116] (STJ196728)

STJ196728

GENERAL INFORMATION

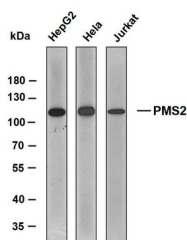
Product Type	Primary antibodies
Short Description	Mouse monoclonal antibody anti-Mismatch repair endonuclease PMS2 (600-700 aa) is suitable for use in Immunohistochemistry and Western Blot research applications.
Applications	IHC/WB
Host/Source	Mouse
Reactivity	Human/Mouse/Rat

PRODUCT PROPERTIES

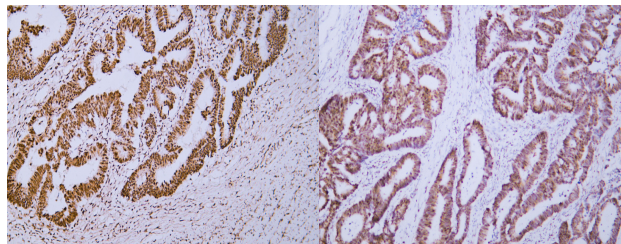
Clonality	Monoclonal
Clone ID	PT2116
Concentration	
Conjugation	Unconjugated
Purification	The antibody was affinity-purified from mouse ascites by affinity-chromatography using specific immunogen.
Dilution Range	IHC-P 1:100-500 WB 1:200-1000 IF 1:100-500
Formulation	Liquid in PBS containing 50% Glycerol, 0.5% BSA and 0.02% Sodium Azide.
Isotype	
Storage Instruction	Store at -20°C for up to 1 year from the date of receipt, and avoid repeat freeze-thaw cycles.

TARGET INFORMATION

Gene ID	5395
Gene Symbol	PMS2
Uniprot ID	PMS2_HUMAN
Immunogen	Synthesized peptide derived from the human Postmeiotic Segregation Increased 2 (PMS2) at the amino acid range 600-700
Immunogen Region	600-700 aa
Specificity	This antibody detects endogenous levels of Postmeiotic Segregation Increased 2 (PMS2) at Human
Immunogen Sequence	



Various whole cell lysates were separated by 8% SDS-PAGE, and the membrane was blotted with anti-PMS2 antibody. The HRP-conjugated anti-mouse IgG antibody was used to detect the antibody. Predicted band size: 96 kDa Observed band size: 110 kDa



Human colon carcinoma tissue was stained with Anti-PMS2 (ABT016) Antibody

Human colon carcinoma tissue was stained with Anti-PMS2 (ABT016) Antibody

This product is suitable for in-vitro studies under the RESEARCH USE ONLY [RUO] licence. This product must not be used as for diagnostic or other medical purposes.
St John's Laboratory Ltd, Knowledge Dock Business Centre, University Way, London, E16 2RD | Tel: 0208 223 3081