

Anti-INS antibody (25-110 aa) [PT0156] (STJ196713)

STJ196713

GENERAL INFORMATION

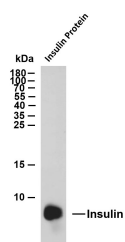
Product Type	Primary antibodies
Short Description	Mouse monoclonal antibody anti-Insulin (25-110 aa) is suitable for use in Immunohistochemistry, Western Blot and Immunofluorescence research applications.
Applications	IHC/WB/IF
Host/Source	Mouse
Reactivity	Human/Mouse/Rat

PRODUCT PROPERTIES

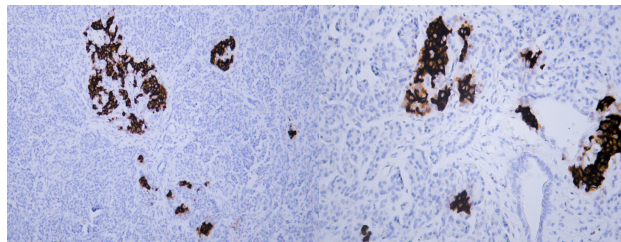
Clonality	Monoclonal
Clone ID	PT0156
Concentration	
Conjugation	Unconjugated
Purification	The antibody was affinity-purified from mouse ascites by affinity-chromatography using specific immunogen.
Dilution Range	IHC-P 1:100-500 WB 1:200-1000 IF 1:100-500
Formulation	Liquid in PBS containing 50% Glycerol, 0.5% BSA and 0.02% Sodium Azide.
Isotype	
Storage	Store at -20°C for up to 1 year from the date of receipt, and avoid repeat freeze-thaw cycles.
Instruction	

TARGET INFORMATION

Gene ID	3630
Gene Symbol	INS
Uniprot ID	INS_HUMAN
Immunogen	Synthesized peptide derived from the human Insulin at the amino acid range 25-110
Immunogen Region	25-110 aa
Specificity	This antibody detects endogenous levels of Insulin at Human
Immunogen Sequence	



Whole cell lysates were separated by 15% SDS-PAGE, and the membrane was blotted with anti-Insulin (ABT340) antibody. The HRP-conjugated Goat anti-mouse IgG (H + L) antibody was used to detect the antibody. Lane 1: Insulin recombinant protein. Predicted band size: 12kDa. Observed band size: 9kDa.



Human pancreas tissue was stained with Anti-Insulin (ABT340) Antibody

Human pancreas tissue was stained with Anti-Insulin (ABT340) Antibody

This product is suitable for in-vitro studies under the RESEARCH USE ONLY [RUO] licence. This product must not be used as for diagnostic or other medical purposes.
St John's Laboratory Ltd, Knowledge Dock Business Centre, University Way, London, E16 2RD | Tel: 0208 223 3081