

## Anti-S100 A8+A9 antibody [11C12] (STJ196686)

STJ196686

### GENERAL INFORMATION

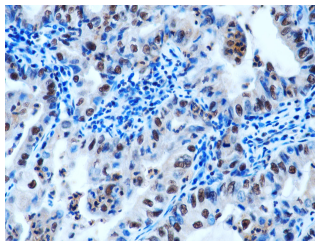
<b>Product Type</b>	Primary antibodies
<b>Short Description</b>	Mouse monoclonal antibody anti-S100 A8+A9 is suitable for use in Immunohistochemistry research applications.
<b>Applications</b>	IHC
<b>Host/Source</b>	Mouse
<b>Reactivity</b>	Human

### PRODUCT PROPERTIES

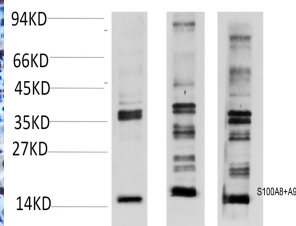
<b>Clonality</b>	Monoclonal
<b>Clone ID</b>	11C12
<b>Concentration</b>	1 mg/mL
<b>Conjugation</b>	Unconjugated
<b>Purification</b>	The antibody was affinity-purified from mouse ascites by affinity-chromatography using specific immunogen.
<b>Dilution Range</b>	IHC 1:50-200
<b>Formulation</b>	Liquid in PBS containing 50% Glycerol, 0.5% BSA and 0.02% Sodium Azide.
<b>Isotype</b>	
<b>Storage Instruction</b>	Store at -20°C for up to 1 year from the date of receipt, and avoid repeat freeze-thaw cycles.

### TARGET INFORMATION

<b>Gene ID</b>	<a href="#">6280</a> <a href="#">6279</a>
<b>Gene Symbol</b>	<a href="#">S100A9</a> <a href="#">S100A8</a>
<b>Uniprot ID</b>	<a href="#">S10A9_HUMAN</a> <a href="#">S10A8_HUMAN</a>
<b>Immunogen</b>	Synthesized peptide derived from the human S100 A8+A9
<b>Immunogen Region</b>	
<b>Specificity</b>	This antibody detects endogenous levels of S100 A8+A9 at Human
<b>Immunogen Sequence</b>	



Immunohistochemical analysis of paraffin-embedded Human Lung Carcinoma Tissue using S100A8+A9 Complex mouse monoclonal antibody diluted at 1:200.



Western blot analysis of A) A549 Cell, B) Mouse Spleen Tissue, 3) Rat Lung Tissue lysate using S100A8+A9 Complex mouse monoclonal antibody diluted at 1:2,000.

This product is suitable for in-vitro studies under the RESEARCH USE ONLY [RUO] licence. This product must not be used as for diagnostic or other medical purposes.  
St John's Laboratory Ltd, Knowledge Dock Business Centre, University Way, London, E16 2RD | Tel: 0208 223 3081