

## Anti-MAPK14 antibody (300-360 aa) [4G2] (STJ196672)

STJ196672

### GENERAL INFORMATION

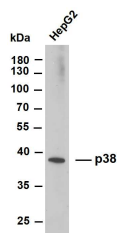
<b>Product Type</b>	Primary antibodies
<b>Short Description</b>	Mouse monoclonal antibody anti-Mitogen-activated protein kinase 14 (300-360 aa) is suitable for use in Immunohistochemistry and Western Blot research applications.
<b>Applications</b>	IHC/WB
<b>Host/Source</b>	Mouse
<b>Reactivity</b>	Human/Mouse/Rat

### PRODUCT PROPERTIES

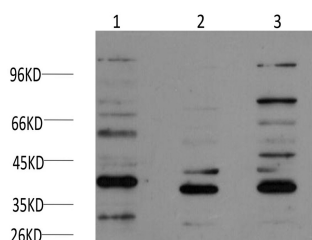
<b>Clonality</b>	Monoclonal
<b>Clone ID</b>	4G2
<b>Concentration</b>	1 mg/mL
<b>Conjugation</b>	Unconjugated
<b>Purification</b>	The antibody was affinity-purified from mouse ascites by affinity-chromatography using specific immunogen.
<b>Dilution Range</b>	IHC-P 1:50-200 WB 1:1000-2000
<b>Formulation</b>	Liquid in PBS containing 50% Glycerol, 0.5% BSA and 0.02% Sodium Azide.
<b>Isotype</b>	
<b>Storage</b>	Store at -20°C for up to 1 year from the date of receipt, and avoid repeat freeze-thaw cycles.
<b>Instruction</b>	

### TARGET INFORMATION

<b>Gene ID</b>	1432
<b>Gene Symbol</b>	MAPK14
<b>Uniprot ID</b>	MK14_HUMAN
<b>Immunogen</b>	Synthesized peptide derived from the human p38 at the amino acid range 300-360
<b>Immunogen Region</b>	300-360 aa
<b>Specificity</b>	This antibody detects endogenous levels of p38 at Human, Mouse, Rat
<b>Immunogen Sequence</b>	



Whole cell lysates of HepG2 were separated by 10% SDS-PAGE, and the membrane was blotted with anti-p38 (PT2306) antibody. The HRP-conjugated Goat anti-mouse IgG (H + L) antibody was used to detect the antibody. Lane 1: HepG2 Predicted band size: 41kDa Observed band size: 38kDa



Western blot analysis of 1) Hela Cell, 2) Mouse Liver Tissue, 3) Rat Kidney Tissue lysate using P38 mouse Monoclonal antibody diluted at 1:2,000.

This product is suitable for in-vitro studies under the RESEARCH USE ONLY [RUO] licence. This product must not be used as for diagnostic or other medical purposes.  
St John's Laboratory Ltd, Knowledge Dock Business Centre, University Way, London, E16 2RD | Tel: 0208 223 3081