

## Anti-SRC antibody [Mix] (STJ196656)

STJ196656

### GENERAL INFORMATION

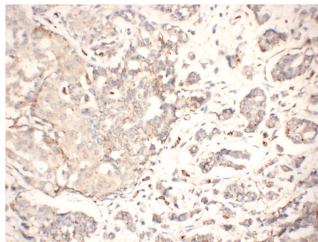
<b>Product Type</b>	Primary antibodies
<b>Short Description</b>	Mouse monoclonal antibody anti-Proto-oncogene tyrosine-protein kinase Src is suitable for use in Immunohistochemistry and Western Blot research applications.
<b>Applications</b>	IHC/WB
<b>Host/Source</b>	Mouse
<b>Reactivity</b>	Human/Mouse/Rat

### PRODUCT PROPERTIES

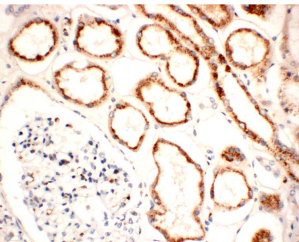
<b>Clonality</b>	Monoclonal
<b>Clone ID</b>	Mix
<b>Concentration</b>	1 mg/mL
<b>Conjugation</b>	Unconjugated
<b>Purification</b>	The antibody was affinity-purified from mouse ascites by affinity-chromatography using specific immunogen.
<b>Dilution Range</b>	IHC-P 1:50-200 WB 1:1000-2000
<b>Formulation</b>	Liquid in PBS containing 50% Glycerol, 0.5% BSA and 0.02% Sodium Azide.
<b>Isotype</b>	
<b>Storage</b>	Store at -20°C for up to 1 year from the date of receipt, and avoid repeat freeze-thaw cycles.
<b>Instruction</b>	

### TARGET INFORMATION

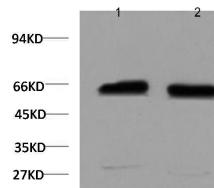
<b>Gene ID</b>	6714
<b>Gene Symbol</b>	SRC
<b>Uniprot ID</b>	SRC_HUMAN
<b>Immunogen</b>	Synthesized peptide derived from the human Src
<b>Immunogen Region</b>	
<b>Specificity</b>	This antibody detects endogenous levels of Src at Human, Mouse, Rat
<b>Immunogen Sequence</b>	



Immunohistochemical analysis of paraffin-embedded Human Breast Carcinoma tissue using Src mouse Monoclonal antibody diluted at 1:200.



Immunohistochemical analysis of paraffin-embedded Human Kidney tissue using Src mouse Monoclonal antibody diluted at 1:200.



Western blot analysis of 1) HeLa Cell, 2) 293T Cell lysate using Src mouse Monoclonal antibody diluted at 1:2,000.

This product is suitable for in-vitro studies under the RESEARCH USE ONLY [RUO] licence. This product must not be used as for diagnostic or other medical purposes.  
St John's Laboratory Ltd, Knowledge Dock Business Centre, University Way, London, E16 2RD | Tel: 0208 223 3081