

Anti-DCT antibody [2A10] (STJ196653)

STJ196653

GENERAL INFORMATION

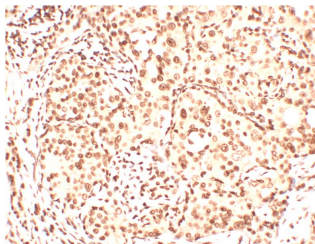
Product Type	Primary antibodies
Short Description	Mouse monoclonal antibody anti-L-dopachrome tautomerase is suitable for use in Immunohistochemistry and Western Blot research applications.
Applications	IHC/WB
Host/Source	Mouse
Reactivity	Human/Mouse/Rat

PRODUCT PROPERTIES

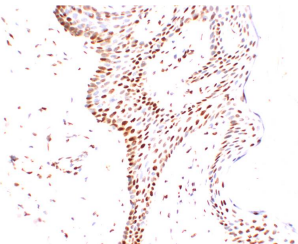
Clonality	Monoclonal
Clone ID	2A10
Concentration	1 mg/mL
Conjugation	Unconjugated
Purification	The antibody was affinity-purified from mouse ascites by affinity-chromatography using specific immunogen.
Dilution Range	IHC-P 1:50-200 WB 1:1000-2000
Formulation	Liquid in PBS containing 50% Glycerol, 0.5% BSA and 0.02% Sodium Azide.
Isotype	
Storage Instruction	Store at -20°C for up to 1 year from the date of receipt, and avoid repeat freeze-thaw cycles.

TARGET INFORMATION

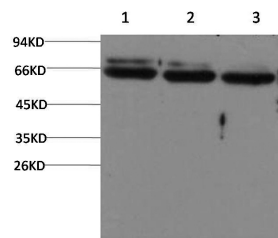
Gene ID	1638
Gene Symbol	DCT
Uniprot ID	TYRP2_HUMAN
Immunogen	Synthesized peptide derived from the human TRP2 DCT
Immunogen Region	
Specificity	This antibody detects endogenous levels of TRP2 DCT at Human, Mouse, Rat
Immunogen Sequence	



Immunohistochemical analysis of paraffin-embedded Human Breast Carcinoma tissue using TRP2/DCT mouse Monoclonal antibody diluted at 1:200.



Immunohistochemical analysis of paraffin-embedded Human Skin Tissue using TRP2/DCT mouse Monoclonal antibody diluted at 1:200.



Western blot analysis of 1) Human Brain, 2) Mouse Brain, 3) Rat Brain Tissue lysate using TRP2/DCT mouse Monoclonal antibody diluted at 1:5,000.

This product is suitable for in-vitro studies under the RESEARCH USE ONLY [RUO] licence. This product must not be used as for diagnostic or other medical purposes.
St John's Laboratory Ltd, Knowledge Dock Business Centre, University Way, London, E16 2RD | Tel: 0208 223 3081