

Anti-Alpha-tubulin antibody [Mix] (STJ196642)

STJ196642

GENERAL INFORMATION

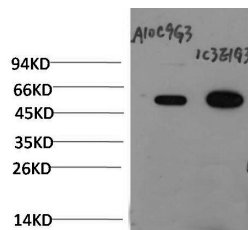
Product Type	Primary antibodies
Short Description	Mouse monoclonal antibody anti-Alpha-tubulin is suitable for use in Immunohistochemistry and Western Blot research applications.
Applications	IHC/WB
Host/Source	Mouse
Reactivity	C.elegans/Human/Mouse/Rat

PRODUCT PROPERTIES

Clonality	Monoclonal
Clone ID	Mix
Concentration	1 mg/mL
Conjugation	Unconjugated
Purification	The antibody was affinity-purified from mouse ascites by affinity-chromatography using specific immunogen.
Dilution Range	IHC-P 1:100-500 WB 1:5000-20000
Formulation	Liquid in PBS containing 50% Glycerol, 0.5% BSA and 0.02% Sodium Azide.
Isotype	
Storage Instruction	Store at -20°C for up to 1 year from the date of receipt, and avoid repeat freeze-thaw cycles.

TARGET INFORMATION

Gene ID	
Gene Symbol	
Uniprot ID	
Immunogen	Synthesized peptide derived from C. Elegans Alpha-tubulin
Immunogen Region	
Specificity	This antibody detects endogenous levels of C. Elegans Alpha-tubulin
Immunogen Sequence	



Western blot analysis of C. Elegans whole body lysate using mouse monoclonal antibody diluted at 1:20,000.

This product is suitable for in-vitro studies under the RESEARCH USE ONLY [RUO] licence. This product must not be used as for diagnostic or other medical purposes.
St John's Laboratory Ltd, Knowledge Dock Business Centre, University Way, London, E16 2RD | Tel: 0208 223 3081