

Anti-GAPDH antibody [Mix] (STJ196641)

STJ196641

GENERAL INFORMATION

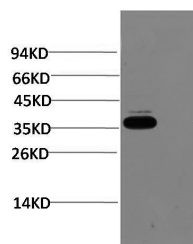
Product Type	Primary antibodies
Short Description	Mouse monoclonal antibody anti-Glyceraldehyde-3-phosphate dehydrogenase 1 is suitable for use in Immunohistochemistry and Western Blot research applications.
Applications	IHC/WB
Host/Source	Mouse
Reactivity	C.elegans/Human/Mouse/Rat

PRODUCT PROPERTIES

Clonality	Monoclonal
Clone ID	Mix
Concentration	1 mg/mL
Conjugation	Unconjugated
Purification	The antibody was affinity-purified from mouse ascites by affinity-chromatography using specific immunogen.
Dilution Range	IHC-P 1:100-500 WB 1:5000-20000
Formulation	Liquid in PBS containing 50% Glycerol, 0.5% BSA and 0.02% Sodium Azide.
Isotype	
Storage	Store at -20°C for up to 1 year from the date of receipt, and avoid repeat freeze-thaw cycles.
Instruction	

TARGET INFORMATION

Gene ID	
Gene Symbol	
Uniprot ID	
Immunogen	Synthesized peptide derived from C. Elegans GAPDH
Immunogen Region	
Specificity	This antibody detects endogenous levels of C. Elegans GAPDH
Immunogen Sequence	



Western blot analysis of C. Elegans whole body lysate using mouse monoclonal antibody diluted at 1:30,000.

This product is suitable for in-vitro studies under the RESEARCH USE ONLY [RUO] licence. This product must not be used as for diagnostic or other medical purposes.
St John's Laboratory Ltd, Knowledge Dock Business Centre, University Way, London, E16 2RD | Tel: 0208 223 3081