

Anti-mCherry-Tag antibody [6B3] (STJ196637)

STJ196637

GENERAL INFORMATION

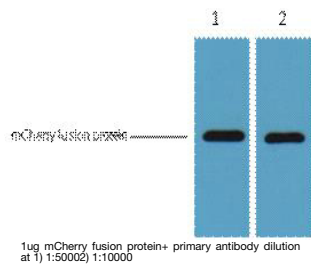
Product Type	Primary antibodies
Short Description	Mouse monoclonal antibody anti-mCherry-Tag is suitable for use in Western Blot research applications.
Applications	WB
Host/Source	Mouse
Reactivity	Species independent

PRODUCT PROPERTIES

Clonality	Monoclonal
Clone ID	6B3
Concentration	
Conjugation	Unconjugated
Purification	The antibody was affinity-purified from mouse ascites by affinity-chromatography using specific immunogen.
Dilution Range	WB 1:5000
Formulation	Liquid in PBS pH7.4, 0.5% BSA, 0.02% Sodium Azide and 50% Glycerol.
Isotype	IgG1
Storage Instruction	Store at -20°C for up to 1 year from the date of receipt, and avoid repeat freeze-thaw cycles.

TARGET INFORMATION

Gene ID	
Gene Symbol	
Uniprot ID	
Immunogen	Recombinant Protein of mCherry-Tag
Immunogen Region	
Specificity	The antibody detects mCherry tag fusion proteins.
Immunogen Sequence	



This product is suitable for in-vitro studies under the RESEARCH USE ONLY [RUO] licence. This product must not be used as for diagnostic or other medical purposes.
St John's Laboratory Ltd, Knowledge Dock Business Centre, University Way, London, E16 2RD | Tel: 0208 223 3081