

## Anti-KRTAP3-3 antibody (35-85 aa) (STJ196602)

STJ196602

### GENERAL INFORMATION

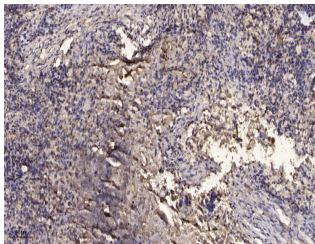
<b>Product Type</b>	Primary antibodies
<b>Short Description</b>	Rabbit polyclonal antibody anti-Keratin-associated protein 3-3 (35-85 aa) is suitable for use in Immunohistochemistry and Immunofluorescence research applications.
<b>Applications</b>	IHC/IF
<b>Host/Source</b>	Rabbit
<b>Reactivity</b>	Human/Mouse

### PRODUCT PROPERTIES

<b>Clonality</b>	Polyclonal
<b>Clone ID</b>	
<b>Concentration</b>	1 mg/mL
<b>Conjugation</b>	Unconjugated
<b>Purification</b>	The antibody was affinity-purified from rabbit antiserum by affinity-chromatography using epitope-specific immunogen.
<b>Dilution Range</b>	IHC-P 1:50-200 IF 1:50-200
<b>Formulation</b>	Liquid in PBS containing 50% Glycerol, 0.5% BSA and 0.02% Sodium Azide.
<b>Isotype</b>	IgG
<b>Storage</b>	Store at -20°C for up to 1 year from the date of receipt, and avoid repeat freeze-thaw cycles.
<b>Instruction</b>	

### TARGET INFORMATION

<b>Gene ID</b>	<a href="#">85293</a>
<b>Gene Symbol</b>	<a href="#">KRTAP3-3</a>
<b>Uniprot ID</b>	<a href="#">KRA33_HUMAN</a>
<b>Immunogen</b>	Synthesized peptide derived from the human KRA33 at the amino acid range 35-85
<b>Immunogen Region</b>	35-85 aa
<b>Specificity</b>	This antibody detects endogenous levels of KRA33 at Human/Mouse
<b>Immunogen Sequence</b>	



Immunohistochemical analysis of paraffin-embedded human Squamous cell carcinoma of lung. 1. Antibody was diluted at 1:200 (4A°C overnight). 2. Tris-EDTA, pH9.0 was used for antigen retrieval. 3. Secondary antibody was diluted at 1:200 (room temperature, 45min).