

## Anti-S100A7A antibody (32-82 aa) (STJ196531)

STJ196531

### GENERAL INFORMATION

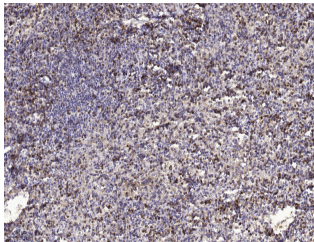
<b>Product Type</b>	Primary antibodies
<b>Short Description</b>	Rabbit polyclonal antibody anti-Protein S100-A7A (32-82 aa) is suitable for use in Immunohistochemistry and ELISA research applications.
<b>Applications</b>	IHC/ELISA
<b>Host/Source</b>	Rabbit
<b>Reactivity</b>	Human/Rat/Mouse

### PRODUCT PROPERTIES

<b>Clonality</b>	Polyclonal
<b>Clone ID</b>	
<b>Concentration</b>	1 mg/mL
<b>Conjugation</b>	Unconjugated
<b>Purification</b>	The antibody was affinity-purified from rabbit antiserum by affinity-chromatography using epitope-specific immunogen.
<b>Dilution Range</b>	IHC-P 1:50-200 ELISA-Pep 1:5000-20000
<b>Formulation</b>	Liquid in PBS containing 50% Glycerol, 0.5% BSA and 0.02% Sodium Azide.
<b>Isotype</b>	IgG
<b>Storage Instruction</b>	Store at -20°C for up to 1 year from the date of receipt, and avoid repeat freeze-thaw cycles.

### TARGET INFORMATION

<b>Gene ID</b>	338324
<b>Gene Symbol</b>	S100A7A
<b>Uniprot ID</b>	S1A7A_HUMAN
<b>Immunogen</b>	Synthesized peptide derived from the human S100A7A at the amino acid range 32-82
<b>Immunogen Region</b>	32-82 aa
<b>Specificity</b>	This antibody detects endogenous levels of human S100A7A
<b>Immunogen Sequence</b>	



Immunohistochemical analysis of paraffin-embedded human spleen tissue. 1. primary Antibody was diluted at 1:200 (4A°C overnight). 2. Sodium citrate pH 6.0 was used for antigen retrieval (~98A°C, 20min). 3. Secondary antibody was diluted at 1:200 (room temperature)

This product is suitable for in-vitro studies under the RESEARCH USE ONLY [RUO] licence. This product must not be used as for diagnostic or other medical purposes.  
St John's Laboratory Ltd, Knowledge Dock Business Centre, University Way, London, E16 2RD | Tel: 0208 223 3081