

Anti-PDE6G antibody (10-90 aa) (STJ196524)

STJ196524

GENERAL INFORMATION

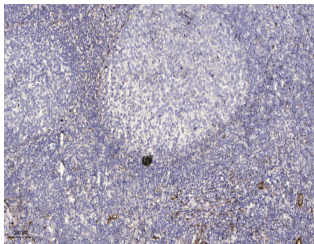
Product Type	Primary antibodies
Short Description	Rabbit polyclonal antibody anti-Retinal rod rhodopsin-sensitive cGMP 3 NA, 5 cyclic phosphodiesterase subunit gamma (10-90 aa) is suitable for use in Immunohistochemistry and ELISA research applications.
Applications	IHC/ELISA
Host/Source	Rabbit
Reactivity	Human/Mouse

PRODUCT PROPERTIES

Clonality	Polyclonal
Clone ID	
Concentration	1 mg/mL
Conjugation	Unconjugated
Purification	The antibody was affinity-purified from rabbit antiserum by affinity-chromatography using epitope-specific immunogen.
Dilution	IHC-P 1:50-200
Range	ELISA-Pep 1:5000-20000
Formulation	Liquid in PBS containing 50% Glycerol, 0.5% BSA and 0.02% Sodium Azide.
Isotype	IgG
Storage	Store at -20°C for up to 1 year from the date of receipt, and avoid repeat freeze-thaw cycles.
Instruction	

TARGET INFORMATION

Gene ID	5148
Gene Symbol	PDE6G
Uniprot ID	CNRG_HUMAN
Immunogen	Synthesized peptide derived from the human PDE6G at the amino acid range 10-90
Immunogen Region	10-90 aa
Specificity	This antibody detects endogenous levels of human PDE6G
Immunogen Sequence	



Immunohistochemical analysis of paraffin-embedded human tonsil. 1. Antibody was diluted at 1:200 (4A°C overnight). 2. Tris-EDTA, pH9.0 was used for antigen retrieval. 3. Secondary antibody was diluted at 1:200 (room temperature, 30min).

This product is suitable for in-vitro studies under the RESEARCH USE ONLY [RUO] licence. This product must not be used as for diagnostic or other medical purposes.
St John's Laboratory Ltd, Knowledge Dock Business Centre, University Way, London, E16 2RD | Tel: 0208 223 3081