

Anti-Phospho-INPPL1-Tyr1135 antibody (STJ196419)

STJ196419

GENERAL INFORMATION

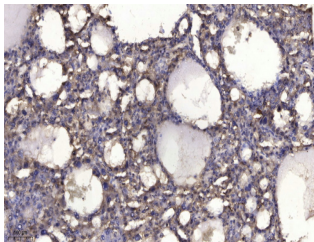
| | |
|--------------------------|---|
| Product Type | Primary antibodies |
| Short Description | Rabbit polyclonal antibody anti-Phospho-Phosphatidylinositol 3, 4, 5-trisphosphate 5-phosphatase 2-Tyr1135 is suitable for use in Western Blot, Immunofluorescence, ELISA and Immunohistochemistry research applications. |
| Applications | WB/IF/ELISA/IHC |
| Host/Source | Rabbit |
| Reactivity | Human/Rat/Mouse |

PRODUCT PROPERTIES

| | |
|----------------------|---|
| Clonality | Polyclonal |
| Clone ID | |
| Concentration | 1 mg/mL |
| Conjugation | Unconjugated |
| Purification | The antibody was affinity-purified from rabbit serum by affinity-chromatography using specific immunogen. |
| Dilution | WB 1:500-2000 |
| Range | IF ICC 1:50-200 ELISA 1:2000-20000 IHC-P 1:50-200 |
| Formulation | Liquid in PBS containing 50% Glycerol, 0.5% BSA and 0.02% Sodium Azide. |
| Isotype | IgG |
| Storage | Store at -20°C for up to 1 year from the date of receipt, and avoid repeat freeze-thaw cycles. |
| Instruction | |

TARGET INFORMATION

| | |
|---------------------------|--|
| Gene ID | 3636 |
| Gene Symbol | INPPL1 |
| Uniprot ID | SHIP2_HUMAN |
| Immunogen | Synthesized phosho peptide around human SHIP2 (Tyr1135) |
| Immunogen Region | |
| Specificity | This antibody detects endogenous levels of Human SHIP2 (phospho-Tyr1135) |
| Immunogen Sequence | |



Immunohistochemical analysis of paraffin-embedded human liver cancer. 1. Antibody was diluted at 1:200 (44°C overnight). 2. Tris-EDTA, pH9.0 was used for antigen retrieval. 3. Secondary antibody was diluted at 1:200 (room temperature, 45min).

This product is suitable for in-vitro studies under the RESEARCH USE ONLY [RUO] licence. This product must not be used as for diagnostic or other medical purposes.
St John's Laboratory Ltd, Knowledge Dock Business Centre, University Way, London, E16 2RD | Tel: 0208 223 3081