

## Anti-Phospho-LATS1-Thr1079 antibody (STJ196346)

STJ196346

### GENERAL INFORMATION

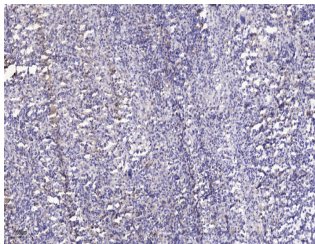
|                          |  |
|--------------------------|--|
| <b>Product Type</b>      | Primary antibodies   |
| <b>Short Description</b> | Rabbit polyclonal antibody anti-Phospho-Serine/threonine-protein kinase LATS1-Thr1079 is suitable for use in Western Blot, ELISA and Immunohistochemistry research applications. |
| <b>Applications</b>      | WB/ELISA/IHC   |
| <b>Host/Source</b>       | Rabbit   |
| <b>Reactivity</b>        | Human/Mouse  |

### PRODUCT PROPERTIES

|                            |   |
|----------------------------|---|
| <b>Clonality</b>           | Polyclonal  |
| <b>Clone ID</b>            |   |
| <b>Concentration</b>       | 1 mg/mL   |
| <b>Conjugation</b>         | Unconjugated  |
| <b>Purification</b>        | The antibody was affinity-purified from rabbit serum by affinity-chromatography using specific immunogen. |
| <b>Dilution Range</b>      | WB 1:500-2000<br>IHC-P 1:50-300<br>ELISA 2000-20000   |
| <b>Formulation</b>         | Liquid in PBS containing 50% Glycerol, 0.5% BSA and 0.02% Sodium Azide.                                   |
| <b>Isotype</b>             | IgG   |
| <b>Storage Instruction</b> | Store at -20°C for up to 1 year from the date of receipt, and avoid repeat freeze-thaw cycles.            |

### TARGET INFORMATION

|                           |  |
|---------------------------|--|
| <b>Gene ID</b>            | 9113   |
| <b>Gene Symbol</b>        | LATS1  |
| <b>Uniprot ID</b>         | LATS1_HUMAN  |
| <b>Immunogen</b>          | Synthesized phospho peptide around human LATS1 (Thr1079)                       |
| <b>Immunogen Region</b>   |  |
| <b>Specificity</b>        | This antibody detects endogenous levels of Human Mouse LATS1 (phospho-Thr1079) |
| <b>Immunogen Sequence</b> |  |



Immunohistochemical analysis of paraffin-embedded human spleen. 1. Antibody was diluted at 1:200 (4A°C overnight). 2. Tris-EDTA, pH9.0 was used for antigen retrieval. 3. Secondary antibody was diluted at 1:200 (room temperature, 45min).

This product is suitable for in-vitro studies under the RESEARCH USE ONLY [RUO] licence. This product must not be used as for diagnostic or other medical purposes.  
St John's Laboratory Ltd, Knowledge Dock Business Centre, University Way, London, E16 2RD | Tel: 0208 223 3081