

Anti-Phospho-FOXM1-Thr600 antibody (STJ196307)

STJ196307

GENERAL INFORMATION

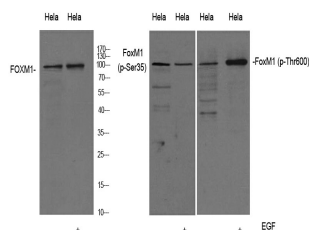
Product Type	Primary antibodies
Short Description	Rabbit polyclonal antibody anti-Phospho-Forkhead box protein M1-Thr600 is suitable for use in Western Blot research applications.
Applications	WB
Host/Source	Rabbit
Reactivity	Human/Rat/Mouse

PRODUCT PROPERTIES

Clonality	Polyclonal
Clone ID	
Concentration	1 mg/mL
Conjugation	Unconjugated
Purification	The antibody was affinity-purified from rabbit serum by affinity-chromatography using specific immunogen.
Dilution Range	WB 1:1000-2000
Formulation	Liquid in PBS containing 50% Glycerol, 0.5% BSA and 0.02% Sodium Azide.
Isotype	IgG
Storage Instruction	Store at -20°C for up to 1 year from the date of receipt, and avoid repeat freeze-thaw cycles.

TARGET INFORMATION

Gene ID	2305
Gene Symbol	FOXM1
Uniprot ID	FOXM1_HUMAN
Immunogen	Synthesized phosho peptide around human FoxM1 (Thr600)
Immunogen Region	
Specificity	This antibody detects endogenous levels of Human FoxM1 (phospho-Thr600)
Immunogen Sequence	



Western Blot analysis of mouse and rat brain lysis treated or untreated by EGF 20ng/ml 30'. primary Antibody was diluted at 1:1000. Secondary antibody (catalog# STJS000791) was diluted at 1:10000

This product is suitable for in-vitro studies under the RESEARCH USE ONLY [RUO] licence. This product must not be used as for diagnostic or other medical purposes.
St John's Laboratory Ltd, Knowledge Dock Business Centre, University Way, London, E16 2RD | Tel: 0208 223 3081