

## Anti-Phospho-DNM1L-Ser616 antibody (STJ196288)

STJ196288

### GENERAL INFORMATION

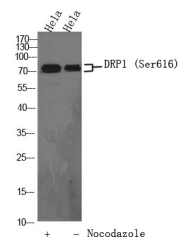
<b>Product Type</b>	Primary antibodies
<b>Short Description</b>	Rabbit polyclonal antibody anti-Phospho-Dynamin-1-like protein-Ser616 is suitable for use in Western Blot research applications.
<b>Applications</b>	WB
<b>Host/Source</b>	Rabbit
<b>Reactivity</b>	Human/Mouse/Rat

### PRODUCT PROPERTIES

<b>Clonality</b>	Polyclonal
<b>Clone ID</b>	
<b>Concentration</b>	1 mg/mL
<b>Conjugation</b>	Unconjugated
<b>Purification</b>	The antibody was affinity-purified from rabbit serum by affinity-chromatography using specific immunogen.
<b>Dilution Range</b>	WB 1:1000-2000
<b>Formulation</b>	Liquid in PBS containing 50% Glycerol, 0.5% BSA and 0.02% Sodium Azide.
<b>Isotype</b>	IgG
<b>Storage</b>	Store at -20°C for up to 1 year from the date of receipt, and avoid repeat freeze-thaw cycles.
<b>Instruction</b>	

### TARGET INFORMATION

<b>Gene ID</b>	10059
<b>Gene Symbol</b>	DNM1L
<b>Uniprot ID</b>	DNM1L_HUMAN
<b>Immunogen</b>	Synthesized phosho peptide around human DRP1 (Ser616)
<b>Immunogen Region</b>	
<b>Specificity</b>	Phospho-DRP1 (S616) Polyclonal Antibody detects endogenous levels of DRP1 protein only when phosphorylated at S616 (human) , S622 (mouse) , S635 (rat)
<b>Immunogen Sequence</b>	



Western Blot analysis of HeLa cells, HeLa cell treated or untreated by Nocodazole at 100 ng/ml 17h. primary Antibody was diluted at 1:1000. Secondary antibody (catalog#STJS000791 was diluted at 1:10000

This product is suitable for in-vitro studies under the RESEARCH USE ONLY [RUO] licence. This product must not be used as for diagnostic or other medical purposes.  
St John's Laboratory Ltd, Knowledge Dock Business Centre, University Way, London, E16 2RD | Tel: 0208 223 3081