

Anti-LCE4A antibody (48-98 aa) (STJ196181)

STJ196181

GENERAL INFORMATION

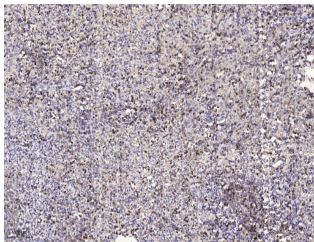
| | |
|--------------------------|---|
| Product Type | Primary antibodies |
| Short Description | Rabbit polyclonal antibody anti-Late cornified envelope protein 4A (48-98 aa) is suitable for use in Immunohistochemistry and Immunofluorescence research applications. |
| Applications | IHC/IF |
| Host/Source | Rabbit |
| Reactivity | Human/Rat/Mouse |

PRODUCT PROPERTIES

| | |
|-----------------------|---|
| Clonality | Polyclonal |
| Clone ID | |
| Concentration | 1 mg/mL |
| Conjugation | Unconjugated |
| Purification | The antibody was affinity-purified from rabbit antiserum by affinity-chromatography using epitope-specific immunogen. |
| Dilution Range | IHC-P 1:50-200 IF 1:50-200 |
| Formulation | Liquid in PBS containing 50% Glycerol, 0.5% BSA and 0.02% Sodium Azide. |
| Isotype | IgG |
| Storage | Store at -20°C for up to 1 year from the date of receipt, and avoid repeat freeze-thaw cycles. |
| Instruction | |

TARGET INFORMATION

| | |
|---------------------------|--|
| Gene ID | 199834 |
| Gene Symbol | LCE4A |
| Uniprot ID | LCE4A_HUMAN |
| Immunogen | Synthesized peptide derived from the human LCE4A at the amino acid range 48-98 |
| Immunogen Region | 48-98 aa |
| Specificity | This antibody detects endogenous levels of LCE4A at Human |
| Immunogen Sequence | |



Immunohistochemical analysis of paraffin-embedded human spleen tissue. 1, primary Antibody was diluted at 1:200 (4°C overnight), 2, Sodium citrate pH 6.0 was used for antigen retrieval (>98°C, 20min), 3, Secondary antibody was diluted at 1:200

This product is suitable for in-vitro studies under the RESEARCH USE ONLY [RUO] licence. This product must not be used as for diagnostic or other medical purposes.
St John's Laboratory Ltd, Knowledge Dock Business Centre, University Way, London, E16 2RD | Tel: 0208 223 3081