

Anti-Placental Alkaline Phosphatase antibody (400-500 aa) [PT2105] (STJ196171)

STJ196171

GENERAL INFORMATION

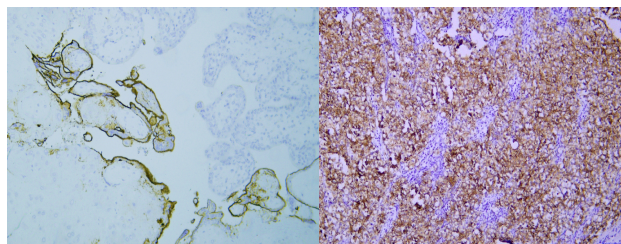
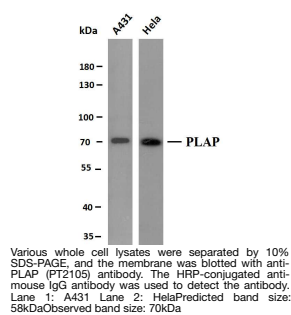
Product Type	Primary antibodies
Short Description	Mouse monoclonal antibody anti-PLAP (400-500 aa) is suitable for use in Immunohistochemistry, Immunofluorescence and Western Blot research applications.
Applications	IHC/IF/WB
Host/Source	Mouse
Reactivity	Human

PRODUCT PROPERTIES

Clonality	Monoclonal
Clone ID	PT2105
Concentration	
Conjugation	Unconjugated
Purification	The antibody was affinity-purified from mouse ascites by affinity-chromatography using specific immunogen.
Dilution Range	IHC-P 1:100-300 WB 1:500-2000 IF 1:50-200
Formulation	Liquid in PBS containing 50% Glycerol, 0.5% BSA and 0.02% Sodium Azide.
Isotype	
Storage	Store at -20°C for up to 1 year from the date of receipt, and avoid repeat freeze-thaw cycles.
Instruction	

TARGET INFORMATION

Gene ID	
Gene Symbol	
Uniprot ID	
Immunogen	Synthesized peptide derived from the human Placental Alkaline Phosphatase (PLAP) at the amino acid range 400-500
Immunogen Region	400-500 aa
Specificity	This antibody detects endogenous levels of human Placental Alkaline Phosphatase (PLAP)
Immunogen Sequence	



Human placenta tissue was stained with Anti-PLAP (PT2105) Antibody

Immunohistochemical analysis of paraffin-embedded human Seminoma Antibody was diluted at 1:200 (4A°C overnight).

This product is suitable for in-vitro studies under the RESEARCH USE ONLY [RUO] licence. This product must not be used as for diagnostic or other medical purposes.
St John's Laboratory Ltd, Knowledge Dock Business Centre, University Way, London, E16 2RD | Tel: 0208 223 3081