

## Anti-ESR2 antibody (400-530 aa) (STJ196169)

STJ196169

### GENERAL INFORMATION

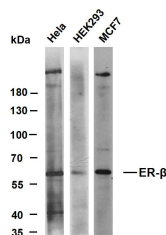
<b>Product Type</b>	Primary antibodies
<b>Short Description</b>	Mouse monoclonal antibody anti-Estrogen receptor beta (400-530 aa) is suitable for use in Immunohistochemistry, Immunofluorescence and Western Blot research applications.
<b>Applications</b>	IHC/IF/WB
<b>Host/Source</b>	Mouse
<b>Reactivity</b>	Human

### PRODUCT PROPERTIES

<b>Clonality</b>	Monoclonal
<b>Clone ID</b>	
<b>Concentration</b>	
<b>Conjugation</b>	Unconjugated
<b>Purification</b>	The antibody was affinity-purified from mouse ascites by affinity-chromatography using specific immunogen.
<b>Dilution Range</b>	IHC-P 1:100-300 WB 1:500-2000 IF 1:50-200
<b>Formulation</b>	Liquid in PBS containing 50% Glycerol, 0.5% BSA and 0.02% Sodium Azide.
<b>Isotype</b>	
<b>Storage</b>	Store at -20°C for up to 1 year from the date of receipt, and avoid repeat freeze-thaw cycles.
<b>Instruction</b>	

### TARGET INFORMATION

<b>Gene ID</b>	2100
<b>Gene Symbol</b>	ESR2
<b>Uniprot ID</b>	ESR2_HUMAN
<b>Immunogen</b>	Synthesized peptide derived from the human Estrogen Receptor Beta at the amino acid range 400-530
<b>Immunogen Region</b>	400-530 aa
<b>Specificity</b>	This antibody detects endogenous levels of human Estrogen Receptor Beta
<b>Immunogen Sequence</b>	



Various whole cell lysates were separated by 8% SDS-PAGE, and the membrane was blotted with anti-ER- $\beta$  (PT0318) antibody. The HRP-conjugated Goat anti-mouse IgG (H + L) antibody was used to detect the antibody. Lane 1: HeLa Lane 2: HEK293 Lane 3: MCF7 Predicted band size: 59kDa Observed band size: 59kDa

This product is suitable for in-vitro studies under the RESEARCH USE ONLY [RUO] licence. This product must not be used as for diagnostic or other medical purposes.  
St John's Laboratory Ltd, Knowledge Dock Business Centre, University Way, London, E16 2RD | Tel: 0208 223 3081