

Anti-YWHAH antibody (STJ196152)

STJ196152

GENERAL INFORMATION

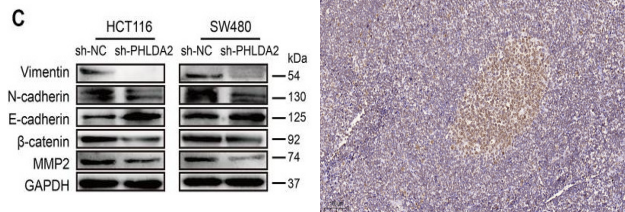
Product Type	Primary antibodies
Short Description	Mouse monoclonal antibody anti-14-3-3 protein eta is suitable for use in Western Blot and Immunohistochemistry research applications.
Applications	WB/IHC
Host/Source	Mouse
Reactivity	Human/Mouse/Rat

PRODUCT PROPERTIES

Clonality	Monoclonal
Clone ID	
Concentration	1 mg/mL
Conjugation	Unconjugated
Purification	The antibody was affinity-purified from mouse ascites by affinity-chromatography using epitope-specific immunogen.
Dilution Range	WB 1:500-2000 IHC 1:50-200
Formulation	Liquid in PBS containing 50% Glycerol and 0.02% Sodium Azide.
Isotype	IgG
Storage Instruction	Store at -20°C for up to 1 year from the date of receipt, and avoid repeat freeze-thaw cycles.

TARGET INFORMATION

Gene ID	7533
Gene Symbol	YWHAH
Uniprot ID	1433F_HUMAN
Immunogen	Synthesized peptide derived from the human 14-3-3 eta
Immunogen Region	
Specificity	This antibody detects endogenous levels of 14-3-3 eta at Human, Mouse, Rat
Immunogen Sequence	



Ma, Zhan, Shuping Lou, and Zheng Jiang. "PHLDA2 regulates EMT and autophagy in colorectal cancer via the PI3K/AKT signaling pathway." *Aging (Albany NY)* 12. 9 (2020) : 7985.

Immunohistochemical analysis of paraffin-embedded human tonsil. 1. Tris-EDTA, pH9.0 was used for antigen retrieval. 2. Antibody was diluted at 1:200 (44°C overnight. 3. Secondary antibody was diluted at 1:200 (room temperature, 45min).

This product is suitable for in-vitro studies under the RESEARCH USE ONLY [RUO] licence. This product must not be used as for diagnostic or other medical purposes.
St John's Laboratory Ltd, Knowledge Dock Business Centre, University Way, London, E16 2RD | Tel: 0208 223 3081