

Anti-PGM2L1 antibody (80-130 aa) (STJ196008)

STJ196008

GENERAL INFORMATION

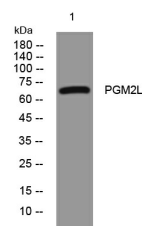
Product Type	Primary antibodies
Short Description	Rabbit polyclonal antibody anti-Glucose 1, 6-bisphosphate synthase (80-130 aa) is suitable for use in Western Blot, ELISA and Immunohistochemistry research applications.
Applications	WB/ELISA/IHC
Host/Source	Rabbit
Reactivity	Human/Mouse

PRODUCT PROPERTIES

Clonality	Polyclonal
Clone ID	
Concentration	1 mg/mL
Conjugation	Unconjugated
Purification	The antibody was affinity-purified from rabbit antiserum by affinity-chromatography using epitope-specific immunogen.
Dilution Range	WB 1:500-2000 IHC-P 1:50-300 ELISA 2000-20000
Formulation	Liquid in PBS containing 50% Glycerol, 0.5% BSA and 0.02% Sodium Azide.
Isotype	IgG
Storage Instruction	Store at -20°C for up to 1 year from the date of receipt, and avoid repeat freeze-thaw cycles.

TARGET INFORMATION

Gene ID	283209
Gene Symbol	PGM2L1
Uniprot ID	PGM2L_HUMAN
Immunogen	Synthesized peptide derived from the human PGM2L at the amino acid range 80-130
Immunogen Region	80-130 aa
Specificity	This antibody detects endogenous levels of PGM2L at Human/Mouse
Immunogen Sequence	



Western blot analysis of lysates from 293T cells, primary antibody was diluted at 1:1000, 4°C over night

This product is suitable for in-vitro studies under the RESEARCH USE ONLY [RUO] licence. This product must not be used as for diagnostic or other medical purposes.
St John's Laboratory Ltd, Knowledge Dock Business Centre, University Way, London, E16 2RD | Tel: 0208 223 3081