

## Anti-PRIM2 antibody (369-419 aa) (STJ195782)

STJ195782

### GENERAL INFORMATION

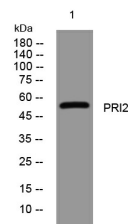
<b>Product Type</b>	Primary antibodies
<b>Short Description</b>	Rabbit polyclonal antibody anti-DNA primase large subunit (369-419 aa) is suitable for use in Western Blot and Immunohistochemistry research applications.
<b>Applications</b>	WB/IHC
<b>Host/Source</b>	Rabbit
<b>Reactivity</b>	Human/Mouse/Rat

### PRODUCT PROPERTIES

<b>Clonality</b>	Polyclonal
<b>Clone ID</b>	
<b>Concentration</b>	1 mg/mL
<b>Conjugation</b>	Unconjugated
<b>Purification</b>	The antibody was affinity-purified from rabbit antiserum by affinity-chromatography using epitope-specific immunogen.
<b>Dilution Range</b>	WB 1:500-2000 IHC-P 1:50-300
<b>Formulation</b>	Liquid in PBS containing 50% Glycerol, 0.5% BSA and 0.02% Sodium Azide.
<b>Isotype</b>	IgG
<b>Storage</b>	Store at -20°C for up to 1 year from the date of receipt, and avoid repeat freeze-thaw cycles.
<b>Instruction</b>	

### TARGET INFORMATION

<b>Gene ID</b>	5558
<b>Gene Symbol</b>	PRIM2
<b>Uniprot ID</b>	PR12_HUMAN
<b>Immunogen</b>	Synthesized peptide derived from the human PRI2 at the amino acid range 369-419
<b>Immunogen Region</b>	369-419 aa
<b>Specificity</b>	This antibody detects endogenous levels of PRI2 at Human/Mouse/Rat
<b>Immunogen Sequence</b>	



Western blot analysis of lysates from THP-1 cells, primary antibody was diluted at 1:1000, 4°C over night

This product is suitable for in-vitro studies under the RESEARCH USE ONLY [RUO] licence. This product must not be used as for diagnostic or other medical purposes.  
St John's Laboratory Ltd, Knowledge Dock Business Centre, University Way, London, E16 2RD | Tel: 0208 223 3081