

Anti-KLHDC10 antibody (9-59 aa) (STJ195576)

STJ195576

GENERAL INFORMATION

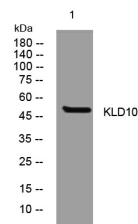
Product Type	Primary antibodies
Short Description	Rabbit polyclonal antibody anti-Kelch domain-containing protein 10 (9-59 aa) is suitable for use in Western Blot and Immunohistochemistry research applications.
Applications	WB/IHC
Host/Source	Rabbit
Reactivity	Human/Mouse/Rat

PRODUCT PROPERTIES

Clonality	Polyclonal
Clone ID	
Concentration	1 mg/mL
Conjugation	Unconjugated
Purification	The antibody was affinity-purified from rabbit antiserum by affinity-chromatography using epitope-specific immunogen.
Dilution Range	WB 1:500-2000 IHC-P 1:50-300
Formulation	Liquid in PBS containing 50% Glycerol, 0.5% BSA and 0.02% Sodium Azide.
Isotype	IgG
Storage	Store at -20°C for up to 1 year from the date of receipt, and avoid repeat freeze-thaw cycles.
Instruction	

TARGET INFORMATION

Gene ID	23008
Gene Symbol	KLHDC10
Uniprot ID	KLD10_HUMAN
Immunogen	Synthesized peptide derived from the human KLD10 at the amino acid range 9-59
Immunogen Region	9-59 aa
Specificity	This antibody detects endogenous levels of KLD10 at Human/Mouse/Rat
Immunogen Sequence	



Western blot analysis of lysates from HpeG2 cells, primary antibody was diluted at 1:1000, 4°C over night

This product is suitable for in-vitro studies under the RESEARCH USE ONLY [RUO] licence. This product must not be used as for diagnostic or other medical purposes.
St John's Laboratory Ltd, Knowledge Dock Business Centre, University Way, London, E16 2RD | Tel: 0208 223 3081