

Anti-PSMD10 antibody (86-136 aa) (STJ195416)

STJ195416

GENERAL INFORMATION

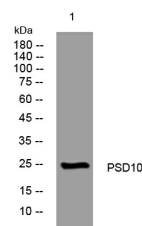
| | |
|--------------------------|--|
| Product Type | Primary antibodies |
| Short Description | Rabbit polyclonal antibody anti-26S proteasome non-ATPase regulatory subunit 10 (86-136 aa) is suitable for use in Western Blot, ELISA and Immunohistochemistry research applications. |
| Applications | WB/ELISA/IHC |
| Host/Source | Rabbit |
| Reactivity | Human/Mouse/Rat |

PRODUCT PROPERTIES

| | |
|----------------------------|---|
| Clonality | Polyclonal |
| Clone ID | |
| Concentration | 1 mg/mL |
| Conjugation | Unconjugated |
| Purification | The antibody was affinity-purified from rabbit antiserum by affinity-chromatography using epitope-specific immunogen. |
| Dilution Range | WB 1:500-2000 IHC-P 1:50-300 ELISA 2000-20000 |
| Formulation | Liquid in PBS containing 50% Glycerol, 0.5% BSA and 0.02% Sodium Azide. |
| Isotype | IgG |
| Storage Instruction | Store at -20°C for up to 1 year from the date of receipt, and avoid repeat freeze-thaw cycles. |

TARGET INFORMATION

| | |
|---------------------------|---|
| Gene ID | 5716 |
| Gene Symbol | PSMD10 |
| Uniprot ID | PSD10_HUMAN |
| Immunogen | Synthesized peptide derived from the human PSD10 at the amino acid range 86-136 |
| Immunogen Region | 86-136 aa |
| Specificity | This antibody detects endogenous levels of PSD10 at Human/Mouse/Rat |
| Immunogen Sequence | |



Western blot analysis of lysates from HpeG2 cells, primary antibody was diluted at 1:1000, 44°C over night

This product is suitable for in-vitro studies under the RESEARCH USE ONLY [RUO] licence. This product must not be used as for diagnostic or other medical purposes.
St John's Laboratory Ltd, Knowledge Dock Business Centre, University Way, London, E16 2RD | Tel: 0208 223 3081