

Anti-NLRP4 antibody (307-357 aa) (STJ195380)

STJ195380

GENERAL INFORMATION

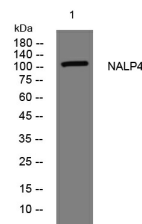
| | |
|--------------------------|--|
| Product Type | Primary antibodies |
| Short Description | Rabbit polyclonal antibody anti-NACHT, LRR and PYD domains-containing protein 4 (307-357 aa) is suitable for use in Western Blot and Immunohistochemistry research applications. |
| Applications | WB/IHC |
| Host/Source | Rabbit |
| Reactivity | Human/Rat/Mouse |

PRODUCT PROPERTIES

| | |
|-----------------------|---|
| Clonality | Polyclonal |
| Clone ID | |
| Concentration | 1 mg/mL |
| Conjugation | Unconjugated |
| Purification | The antibody was affinity-purified from rabbit antiserum by affinity-chromatography using epitope-specific immunogen. |
| Dilution Range | WB 1:500-2000 IHC-P 1:50-300 |
| Formulation | Liquid in PBS containing 50% Glycerol, 0.5% BSA and 0.02% Sodium Azide. |
| Isotype | IgG |
| Storage | Store at -20°C for up to 1 year from the date of receipt, and avoid repeat freeze-thaw cycles. |
| Instruction | |

TARGET INFORMATION

| | |
|---------------------------|--|
| Gene ID | 147945 |
| Gene Symbol | NLRP4 |
| Uniprot ID | NALP4_HUMAN |
| Immunogen | Synthesized peptide derived from the human NALP4 at the amino acid range 307-357 |
| Immunogen Region | 307-357 aa |
| Specificity | This antibody detects endogenous levels of NALP4 at Human |
| Immunogen Sequence | |



Western blot analysis of lysates from KB cells, primary antibody was diluted at 1:1000, 4A°C over night

This product is suitable for in-vitro studies under the RESEARCH USE ONLY [RUO] licence. This product must not be used as for diagnostic or other medical purposes.
St John's Laboratory Ltd, Knowledge Dock Business Centre, University Way, London, E16 2RD | Tel: 0208 223 3081