

Anti-PNLDC1 antibody (410-460 aa) (STJ195185)

STJ195185

GENERAL INFORMATION

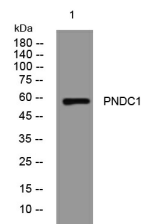
Product Type	Primary antibodies
Short Description	Rabbit polyclonal antibody anti-PolyA-specific ribonuclease PNLDC1-specific ribonuclease domain-containing protein 1 (410-460 aa)
Applications	is suitable for use in Western Blot and Immunohistochemistry research applications.
Host/Source	WB/IHC
Reactivity	Rabbit
	Human/Rat/Mouse

PRODUCT PROPERTIES

Clonality	Polyclonal
Clone ID	
Concentration	1 mg/mL
Conjugation	Unconjugated
Purification	The antibody was affinity-purified from rabbit antiserum by affinity-chromatography using epitope-specific immunogen.
Dilution	WB 1:500-2000
Range	IHC-P 1:50-300
Formulation	Liquid in PBS containing 50% Glycerol, 0.5% BSA and 0.02% Sodium Azide.
Isotype	IgG
Storage	Store at -20°C for up to 1 year from the date of receipt, and avoid repeat freeze-thaw cycles.
Instruction	

TARGET INFORMATION

Gene ID	154197
Gene Symbol	PNLDC1
Uniprot ID	PNDC1_HUMAN
Immunogen	Synthesized peptide derived from the human PNDC1 at the amino acid range 410-460
Immunogen Region	410-460 aa
Specificity	This antibody detects endogenous levels of PNDC1 at Human
Immunogen Sequence	



Western blot analysis of lysates from SH-SY5Y cells, primary antibody was diluted at 1:1000, 4°C over night

This product is suitable for in-vitro studies under the RESEARCH USE ONLY [RUO] licence. This product must not be used as for diagnostic or other medical purposes.
St John's Laboratory Ltd, Knowledge Dock Business Centre, University Way, London, E16 2RD | Tel: 0208 223 3081