

Anti-SOHLH2 antibody (117-167 aa) (STJ195180)

STJ195180

GENERAL INFORMATION

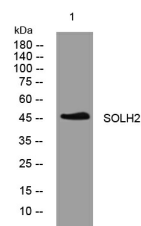
Product Type	Primary antibodies
Short Description	Rabbit polyclonal antibody anti-Spermatogenesis-and oogenesis-specific basic helix-loop-helix-containing protein 2 (117-167 aa) is suitable for use in Western Blot and Immunohistochemistry research applications.
Applications	WB/IHC
Host/Source	Rabbit
Reactivity	Human/Mouse/Rat

PRODUCT PROPERTIES

Clonality	Polyclonal
Clone ID	
Concentration	1 mg/mL
Conjugation	Unconjugated
Purification	The antibody was affinity-purified from rabbit antiserum by affinity-chromatography using epitope-specific immunogen.
Dilution	WB 1:500-2000
Range	IHC-P 1:50-300
Formulation	Liquid in PBS containing 50% Glycerol, 0.5% BSA and 0.02% Sodium Azide.
Isotype	IgG
Storage	Store at -20°C for up to 1 year from the date of receipt, and avoid repeat freeze-thaw cycles.
Instruction	

TARGET INFORMATION

Gene ID	100526761/54937
Gene Symbol	SOHLH2
Uniprot ID	SOHLH2_HUMAN
Immunogen	Synthesized peptide derived from the human SOLH2 at the amino acid range 117-167
Immunogen Region	117-167 aa
Specificity	This antibody detects endogenous levels of SOLH2 at Human/Mouse/Rat
Immunogen Sequence	



Western blot analysis of lysates from AD293 cells, primary antibody was diluted at 1:1000, 4A°C over night

This product is suitable for in-vitro studies under the RESEARCH USE ONLY [RUO] licence. This product must not be used as for diagnostic or other medical purposes.
St John's Laboratory Ltd, Knowledge Dock Business Centre, University Way, London, E16 2RD | Tel: 0208 223 3081