

Anti-KIF18A antibody (713-763 aa) (STJ195037)

STJ195037

GENERAL INFORMATION

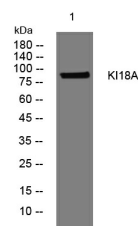
Product Type	Primary antibodies
Short Description	Rabbit polyclonal antibody anti-Kinesin-like protein KIF18A (713-763 aa) is suitable for use in Western Blot, ELISA and Immunohistochemistry research applications.
Applications	WB/ELISA/IHC
Host/Source	Rabbit
Reactivity	Human/Mouse

PRODUCT PROPERTIES

Clonality	Polyclonal
Clone ID	
Concentration	1 mg/mL
Conjugation	Unconjugated
Purification	The antibody was affinity-purified from rabbit antiserum by affinity-chromatography using epitope-specific immunogen.
Dilution Range	WB 1:500-2000 IHC-P 1:50-300 ELISA 2000-20000
Formulation	Liquid in PBS containing 50% Glycerol, 0.5% BSA and 0.02% Sodium Azide.
Isotype	IgG
Storage Instruction	Store at -20°C for up to 1 year from the date of receipt, and avoid repeat freeze-thaw cycles.

TARGET INFORMATION

Gene ID	81930
Gene Symbol	KIF18A
Uniprot ID	KI18A_HUMAN
Immunogen	Synthesized peptide derived from the human K18A at the amino acid range 713-763
Immunogen Region	713-763 aa
Specificity	This antibody detects endogenous levels of K18A at Human/Mouse
Immunogen Sequence	



Western blot analysis of lysates from VEC cells, primary antibody was diluted at 1:1000, 4A°C over night

This product is suitable for in-vitro studies under the RESEARCH USE ONLY [RUO] licence. This product must not be used as for diagnostic or other medical purposes.
St John's Laboratory Ltd, Knowledge Dock Business Centre, University Way, London, E16 2RD | Tel: 0208 223 3081