

Anti-PMS2CL antibody (123-173 aa) (STJ195032)

STJ195032

GENERAL INFORMATION

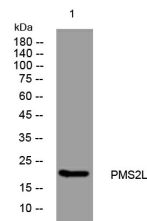
Product Type	Primary antibodies
Short Description	Rabbit polyclonal antibody anti-Protein PMS2CL (123-173 aa) is suitable for use in Western Blot and Immunohistochemistry research applications.
Applications	WB/IHC
Host/Source	Rabbit
Reactivity	Human/Rat/Mouse

PRODUCT PROPERTIES

Clonality	Polyclonal
Clone ID	
Concentration	1 mg/mL
Conjugation	Unconjugated
Purification	The antibody was affinity-purified from rabbit antiserum by affinity-chromatography using epitope-specific immunogen.
Dilution Range	WB 1:500-2000 IHC-P 1:50-300
Formulation	Liquid in PBS containing 50% Glycerol, 0.5% BSA and 0.02% Sodium Azide.
Isotype	IgG
Storage Instruction	Store at -20°C for up to 1 year from the date of receipt, and avoid repeat freeze-thaw cycles.

TARGET INFORMATION

Gene ID	
Gene Symbol	PMS2CL
Uniprot ID	PMS2L_HUMAN
Immunogen	Synthesized peptide derived from the human PMS2L at the amino acid range 123-173
Immunogen Region	123-173 aa
Specificity	This antibody detects endogenous levels of PMS2L at Human
Immunogen Sequence	



Western blot analysis of lysates from KB cells, primary antibody was diluted at 1:1000, 4A°C over night

This product is suitable for in-vitro studies under the RESEARCH USE ONLY [RUO] licence. This product must not be used as for diagnostic or other medical purposes.
St John's Laboratory Ltd, Knowledge Dock Business Centre, University Way, London, E16 2RD | Tel: 0208 223 3081