

Anti-CCL17 antibody (21-70 aa) (STJ194761)

STJ194761

GENERAL INFORMATION

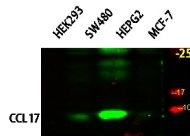
Product Type	Primary antibodies
Short Description	Rabbit polyclonal antibody anti-C-C motif chemokine 17 (21-70 aa) is suitable for use in Western Blot and ELISA research applications.
Applications	WB/ELISA
Host/Source	Rabbit
Reactivity	Human/Rat/Mouse

PRODUCT PROPERTIES

Clonality	Polyclonal
Clone ID	
Concentration	1 mg/mL
Conjugation	Unconjugated
Purification	The antibody was affinity-purified from rabbit antiserum by affinity-chromatography using epitope-specific immunogen.
Dilution Range	WB 1:500-2000 ELISA-Pep 1:5000-20000
Formulation	Liquid in PBS containing 50% Glycerol, 0.5% BSA and 0.02% Sodium Azide.
Isotype	IgG
Storage Instruction	Store at -20°C for up to 1 year from the date of receipt, and avoid repeat freeze-thaw cycles.

TARGET INFORMATION

Gene ID	6361
Gene Symbol	CCL17
Uniprot ID	CCL17_HUMAN
Immunogen	Synthesized peptide derived from the human CCL17 at the amino acid range 21-70
Immunogen Region	21-70 aa
Specificity	This antibody detects endogenous levels of human CCL17
Immunogen Sequence	



Western blot analysis of various lysates, primary antibody was diluted at 1:1000, 4A°C over night, secondary antibody (cat# NA) was diluted at 1:10000, 37A°C 1 hour.

This product is suitable for in-vitro studies under the RESEARCH USE ONLY [RUO] licence. This product must not be used as for diagnostic or other medical purposes.
St John's Laboratory Ltd, Knowledge Dock Business Centre, University Way, London, E16 2RD | Tel: 0208 223 3081