

Anti-Phospho-CaMK2-Thr286 antibody (STJ194696)

STJ194696

GENERAL INFORMATION

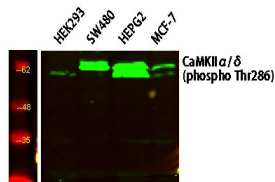
Product Type	Primary antibodies
Short Description	Rabbit polyclonal antibody anti-Phospho-Calcium/calmodulin-dependent protein kinase type II subunit alpha and Calcium/calmodulin-dependent protein kinase type II subunit delta-Thr286 is suitable for use in Western Blot and ELISA research applications
Applications	WB/ELISA
Host/Source	Rabbit
Reactivity	Human/Mouse/Rat

PRODUCT PROPERTIES

Clonality	Polyclonal
Clone ID	
Concentration	1 mg/mL
Conjugation	Unconjugated
Purification	The antibody was affinity-purified from mouse ascites by affinity-chromatography using specific immunogen.
Dilution	WB 1:500-2000
Range	ELISA-Pep 1:5000-20000
Formulation	Liquid in PBS containing 50% Glycerol, 0.5% BSA and 0.02% Sodium Azide.
Isotype	IgG
Storage	Store at -20°C for up to 1 year from the date of receipt, and avoid repeat freeze-thaw cycles.
Instruction	

TARGET INFORMATION

Gene ID	815 817
Gene Symbol	CAMK2A CAMK2D
Uniprot ID	KCC2A_HUMAN KCC2D_HUMAN
Immunogen	Synthesized pospho peptide derived from the human CaMK2 (Phospho-Thr286)
Immunogen Region	
Specificity	This antibody detects endogenous pospho levels of human CaMK2 (Phospho-Thr286)
Immunogen Sequence	



Western blot analysis of various lysates, primary antibody was diluted at 1:1000, 4A°C over night, secondary antibody (cat#4 (NA) was diluted at 1:10000, 37A°C 1hour.

This product is suitable for in-vitro studies under the RESEARCH USE ONLY [RUO] licence. This product must not be used as for diagnostic or other medical purposes.
St John's Laboratory Ltd, Knowledge Dock Business Centre, University Way, London, E16 2RD | Tel: 0208 223 3081