

Anti-PDE6D antibody (89-139 aa) (STJ194209)

STJ194209

GENERAL INFORMATION

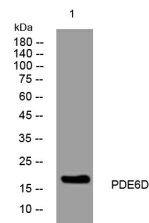
Product Type	Primary antibodies
Short Description	Rabbit polyclonal antibody anti-Retinal rod rhodopsin-sensitive cGMP 3 NA, 5 cyclic phosphodiesterase subunit delta (89-139 aa) is suitable for use in Western Blot research applications.
Applications	WB
Host/Source	Rabbit
Reactivity	Human/Mouse

PRODUCT PROPERTIES

Clonality	Polyclonal
Clone ID	
Concentration	1 mg/mL
Conjugation	Unconjugated
Purification	The antibody was affinity-purified from rabbit antiserum by affinity-chromatography using epitope-specific immunogen.
Dilution Range	WB 1:500-2000
Formulation	Liquid in PBS containing 50% Glycerol, 0.5% BSA and 0.02% Sodium Azide.
Isotype	IgG
Storage Instruction	Store at -20°C for up to 1 year from the date of receipt, and avoid repeat freeze-thaw cycles.

TARGET INFORMATION

Gene ID	5147
Gene Symbol	PDE6D
Uniprot ID	PDE6D_HUMAN
Immunogen	Synthesized peptide derived from the human PDE6D at the amino acid range 89-139
Immunogen Region	89-139 aa
Specificity	This antibody detects endogenous levels of PDE6D at Human/Mouse
Immunogen Sequence	



This product is suitable for in-vitro studies under the RESEARCH USE ONLY [RUO] licence. This product must not be used as for diagnostic or other medical purposes.
St John's Laboratory Ltd, Knowledge Dock Business Centre, University Way, London, E16 2RD | Tel: 0208 223 3081