

Anti-MSMP antibody (58-108 aa) (STJ194024)

STJ194024

GENERAL INFORMATION

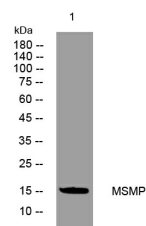
Product Type	Primary antibodies
Short Description	Rabbit polyclonal antibody anti-Prostate-associated microseminoprotein (58-108 aa) is suitable for use in Western Blot research applications.
Applications	WB
Host/Source	Rabbit
Reactivity	Human/Mouse

PRODUCT PROPERTIES

Clonality	Polyclonal
Clone ID	
Concentration	1 mg/mL
Conjugation	Unconjugated
Purification	The antibody was affinity-purified from rabbit antiserum by affinity-chromatography using epitope-specific immunogen.
Dilution Range	WB 1:500-2000
Formulation	Liquid in PBS containing 50% Glycerol, 0.5% BSA and 0.02% Sodium Azide.
Isotype	IgG
Storage Instruction	Store at -20°C for up to 1 year from the date of receipt, and avoid repeat freeze-thaw cycles.

TARGET INFORMATION

Gene ID	692094
Gene Symbol	MSMP
Uniprot ID	MSMP_HUMAN
Immunogen	Synthesized peptide derived from the human MSMP at the amino acid range 58-108
Immunogen Region	58-108 aa
Specificity	This antibody detects endogenous levels of MSMP at Human/Mouse
Immunogen Sequence	



Western blot analysis of lysates from KB cells, primary antibody was diluted at 1:1000, 4A°C over night

This product is suitable for in-vitro studies under the RESEARCH USE ONLY [RUO] licence. This product must not be used as for diagnostic or other medical purposes.
St John's Laboratory Ltd, Knowledge Dock Business Centre, University Way, London, E16 2RD | Tel: 0208 223 3081