

Anti-KIDINS220 antibody (1023-1073 aa) (STJ193908)

STJ193908

GENERAL INFORMATION

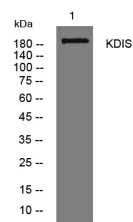
Product Type	Primary antibodies
Short Description	Rabbit polyclonal antibody anti-Kinase D-interacting substrate of 220 kDa (1023-1073 aa) is suitable for use in Western Blot research applications.
Applications	WB
Host/Source	Rabbit
Reactivity	Human/Rat

PRODUCT PROPERTIES

Clonality	Polyclonal
Clone ID	
Concentration	1 mg/mL
Conjugation	Unconjugated
Purification	The antibody was affinity-purified from rabbit antiserum by affinity-chromatography using epitope-specific immunogen.
Dilution Range	WB 1:500-2000
Formulation	Liquid in PBS containing 50% Glycerol, 0.5% BSA and 0.02% Sodium Azide.
Isotype	IgG
Storage Instruction	Store at -20°C for up to 1 year from the date of receipt, and avoid repeat freeze-thaw cycles.

TARGET INFORMATION

Gene ID	57498
Gene Symbol	KIDINS220
Uniprot ID	KDIS_HUMAN
Immunogen	Synthesized peptide derived from the human KDIS at the amino acid range 1023-1073
Immunogen Region	1023-1073 aa
Specificity	This antibody detects endogenous levels of KDIS at Human/Rat
Immunogen Sequence	



Western blot analysis of lysates from 3T3 cells, primary antibody was diluted at 1:1000, 4A°C over night

This product is suitable for in-vitro studies under the RESEARCH USE ONLY [RUO] licence. This product must not be used as for diagnostic or other medical purposes.
St John's Laboratory Ltd, Knowledge Dock Business Centre, University Way, London, E16 2RD | Tel: 0208 223 3081