

## Anti-SRC antibody (400-536 aa) [PTR2316] (STJ193243)

STJ193243

### GENERAL INFORMATION

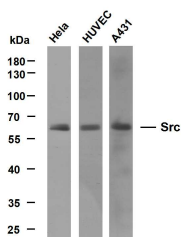
<b>Product Type</b>	Primary antibodies
<b>Short Description</b>	Mouse monoclonal antibody anti-Proto-oncogene tyrosine-protein kinase Src (400-536 aa) is suitable for use in Western Blot research applications.
<b>Applications</b>	WB
<b>Host/Source</b>	Mouse
<b>Reactivity</b>	Human/Mouse/Rat

### PRODUCT PROPERTIES

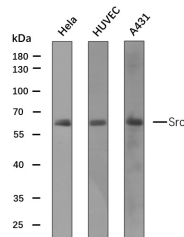
<b>Clonality</b>	Monoclonal
<b>Clone ID</b>	PTR2316
<b>Concentration</b>	
<b>Conjugation</b>	Unconjugated
<b>Purification</b>	The antibody was affinity-purified from mouse ascites by affinity-chromatography using specific immunogen.
<b>Dilution Range</b>	WB 1:1000-2000
<b>Formulation</b>	Liquid in PBS containing 50% Glycerol, 0.5% BSA and 0.02% Sodium Azide.
<b>Isotype</b>	
<b>Storage</b>	Store at -20°C for up to 1 year from the date of receipt, and avoid repeat freeze-thaw cycles.
<b>Instruction</b>	

### TARGET INFORMATION

<b>Gene ID</b>	6714
<b>Gene Symbol</b>	SRC
<b>Uniprot ID</b>	SRC_HUMAN
<b>Immunogen</b>	Synthesized peptide derived from the human c-Src at the amino acid range 400-536
<b>Immunogen Region</b>	400-536 aa
<b>Specificity</b>	This antibody detects endogenous levels of human c-Src
<b>Immunogen Sequence</b>	



Various whole cell lysates were separated by 10% SDS-PAGE, and the membrane was blotted with anti-Src (PTR2316) antibody. The HRP-conjugated Goat anti-mouse IgG (H + L) antibody was used to detect the antibody. Lane 1: HeLa Lane 2: HUVEC Lane 3: A431 Predicted band size: 60kDa Observed band size: 60kDa



Various whole cell lysates (30ug) were separated by 10% SDS-PAGE, and the membrane was blotted with Src antibody at 1ug/ml. The HRP-conjugated anti-mouse IgG antibody (Cat:STJ99665) was used to detect the antibody. Predicted band size: 60kDa

This product is suitable for in-vitro studies under the RESEARCH USE ONLY [RUO] licence. This product must not be used as for diagnostic or other medical purposes.  
St John's Laboratory Ltd, Knowledge Dock Business Centre, University Way, London, E16 2RD | Tel: 0208 223 3081