

Anti-SEN2 antibody (430-526 aa) [PRT2320] (STJ193242)

STJ193242

GENERAL INFORMATION

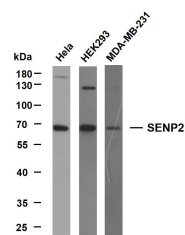
Product Type	Primary antibodies
Short Description	Mouse monoclonal antibody anti-Sentrin-specific protease 2 (430-526 aa) is suitable for use in Western Blot research applications.
Applications	WB
Host/Source	Mouse
Reactivity	Human/Mouse/Rat

PRODUCT PROPERTIES

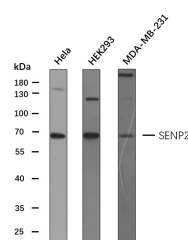
Clonality	Monoclonal
Clone ID	PRT2320
Concentration	
Conjugation	Unconjugated
Purification	The antibody was affinity-purified from mouse ascites by affinity-chromatography using specific immunogen.
Dilution Range	WB 1:1000-2000
Formulation	Liquid in PBS containing 50% Glycerol, 0.5% BSA and 0.02% Sodium Azide.
Isotype	
Storage Instruction	Store at -20°C for up to 1 year from the date of receipt, and avoid repeat freeze-thaw cycles.

TARGET INFORMATION

Gene ID	59343
Gene Symbol	SEN2
Uniprot ID	SEN2_HUMAN
Immunogen	Synthesized peptide derived from the human SEN2 at the amino acid range 430-526
Immunogen Region	430-526 aa
Specificity	This antibody detects endogenous levels of human SEN2
Immunogen Sequence	



Various whole cell lysates were separated by 10% SDS-PAGE, and the membrane was blotted with anti-SEN2 (PRT2320) antibody. The HRP-conjugated Goat anti-mouse IgG (H + L) antibody was used to detect the antibody. Lane 1: HeLa Lane 2: HEK293 Lane 3: MDA-MB-231 Predicted band size: 68kDa Observed band size: 65kDa



Various whole cell lysates (30ug) were separated by 10% SDS-PAGE, and the membrane was blotted with SEN2 antibody at 1ug/ml. The HRP-conjugated anti-mouse IgG antibody (Cat:STJ59665) was used to detect the antibody. Predicted band size: 68kDa

This product is suitable for in-vitro studies under the RESEARCH USE ONLY [RUO] licence. This product must not be used as for diagnostic or other medical purposes.
St John's Laboratory Ltd, Knowledge Dock Business Centre, University Way, London, E16 2RD | Tel: 0208 223 3081