

Anti-Acetyl-Smad2/3-Lys19 antibody (STJ193230)

STJ193230

GENERAL INFORMATION

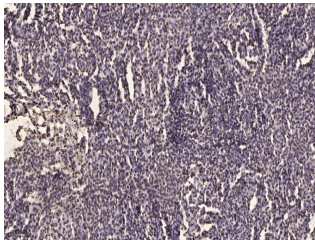
Product Type	Primary antibodies
Short Description	Rabbit polyclonal antibody anti-Acetyl-Mothers against decapentaplegic homolog 2 and Mothers against decapentaplegic homolog 3-Lys19 is suitable for use in Immunohistochemistry, Immunofluorescence and Western Blot research applications.
Applications	IHC/IF/WB
Host/Source	Rabbit
Reactivity	Human/Mouse/Rat

PRODUCT PROPERTIES

Clonality	Polyclonal
Clone ID	
Concentration	1 mg/mL
Conjugation	Unconjugated
Purification	The antibody was affinity-purified from rabbit serum by affinity-chromatography using specific immunogen.
Dilution Range	IHC-P 1:50-200 WB 1:500-2000 IF 1:50-200
Formulation	Liquid in PBS containing 50% Glycerol, 0.5% BSA and 0.02% Sodium Azide.
Isotype	IgG
Storage Instruction	Store at -20°C for up to 1 year from the date of receipt, and avoid repeat freeze-thaw cycles.

TARGET INFORMATION

Gene ID	4087 4088
Gene Symbol	SMAD2 SMAD3
Uniprot ID	SMAD2_HUMAN SMAD3_HUMAN
Immunogen	Synthesized peptide derived from the human Smad2/3 (Acetyl-Lys19)
Immunogen Region	
Specificity	This antibody detects endogenous acetyl levels of Smad2/3 (Acetyl-Lys19) at Human:K19, Mouse:K19, Rat:K19
Immunogen Sequence	



Immunohistochemical analysis of paraffin-embedded human brain tumor. 1. Antibody was diluted at 1:200 (4A°C overnight). 2. Tris-EDTA, pH9.0 was used for antigen retrieval. 3. Secondary antibody was diluted at 1:200 (room temperature, 45min).

This product is suitable for in-vitro studies under the RESEARCH USE ONLY [RUO] licence. This product must not be used as for diagnostic or other medical purposes.

St John's Laboratory Ltd, Knowledge Dock Business Centre, University Way, London, E16 2RD | Tel: 0208 223 3081