

Anti-Phospho-IGF2R-Ser2484 antibody (STJ193219)

STJ193219

GENERAL INFORMATION

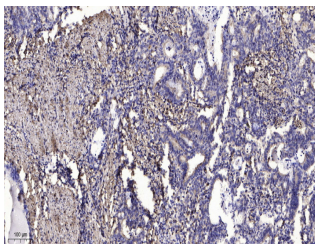
Product Type	Primary antibodies
Short Description	Rabbit polyclonal antibody anti-Phospho-Cation-independent mannose-6-phosphate receptor-Ser2484 is suitable for use in Immunohistochemistry, Immunofluorescence and Western Blot research applications.
Applications	IHC/IF/WB
Host/Source	Rabbit
Reactivity	Human/Mouse/Rat

PRODUCT PROPERTIES

Clonality	Polyclonal
Clone ID	
Concentration	1 mg/mL
Conjugation	Unconjugated
Purification	The antibody was affinity-purified from rabbit serum by affinity-chromatography using specific immunogen.
Dilution	IHC-P 1:50-200
Range	WB 1:500-2000 IF 1:50-200
Formulation	Liquid in PBS containing 50% Glycerol, 0.5% BSA and 0.02% Sodium Azide.
Isotype	IgG
Storage	Store at -20°C for up to 1 year from the date of receipt, and avoid repeat freeze-thaw cycles.
Instruction	

TARGET INFORMATION

Gene ID	3482
Gene Symbol	IGF2R
Uniprot ID	MPRL_HUMAN
Immunogen	Synthesized peptide derived from the human IGF2R (Phospho-Ser2484)
Immunogen Region	
Specificity	This antibody detects endogenous phospho levels of IGF2R (Phospho-Ser2484) at Human:S2484, Mouse:S2476, Rat:S2472
Immunogen Sequence	



Immunohistochemical analysis of paraffin-embedded human Gastric adenocarcinoma. 1. Antibody was diluted at 1:200 (4A°C overnight). 2. Tris-EDTA, pH9.0 was used for antigen retrieval. 3. Secondary antibody was diluted at 1:200 (room temperature, 45min).