

Anti-Phospho-EGFR-Tyr998 antibody (STJ193217)

STJ193217

GENERAL INFORMATION

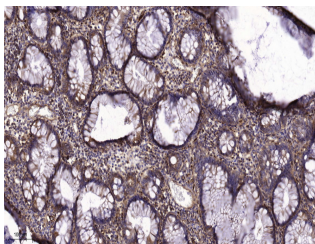
Product Type	Primary antibodies
Short Description	Rabbit polyclonal antibody anti-Phospho-Epidermal growth factor receptor-Tyr998 is suitable for use in Immunohistochemistry, Immunofluorescence and Western Blot research applications.
Applications	IHC/IF/WB
Host/Source	Rabbit
Reactivity	Human/Mouse/Rat

PRODUCT PROPERTIES

Clonality	Polyclonal
Clone ID	
Concentration	1 mg/mL
Conjugation	Unconjugated
Purification	The antibody was affinity-purified from rabbit serum by affinity-chromatography using specific immunogen.
Dilution Range	IHC-P 1:50-200 WB 1:500-2000 IF 1:50-200
Formulation	Liquid in PBS containing 50% Glycerol, 0.5% BSA and 0.02% Sodium Azide.
Isotype	IgG
Storage Instruction	Store at -20°C for up to 1 year from the date of receipt, and avoid repeat freeze-thaw cycles.

TARGET INFORMATION

Gene ID	1956
Gene Symbol	EGFR
Uniprot ID	EGFR_HUMAN
Immunogen	Synthesized peptide derived from the human EGFR (Phospho-Tyr998)
Immunogen Region	
Specificity	This antibody detects endogenous phospho levels of EGFR (Phospho-Tyr998) at Human:Y998, Mouse:Y1000, Rat:Y999
Immunogen Sequence	



Immunohistochemical analysis of paraffin-embedded human colon cancer. 1. Tris-EDTA, pH9.0 was used for antigen retrieval. 2 Antibody was diluted at 1:200 (4A°C overnight. 3. Secondary antibody was diluted at 1:200 (room temperature, 45min).