

Anti-Phospho-MOK-Tyr161 antibody (STJ193216)

STJ193216

GENERAL INFORMATION

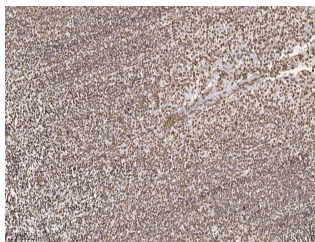
Product Type	Primary antibodies
Short Description	Rabbit polyclonal antibody anti-Phospho-MAPK/MAK/MRK overlapping kinase-Tyr161 is suitable for use in Immunohistochemistry, Immunofluorescence and Western Blot research applications.
Applications	IHC/IF/WB
Host/Source	Rabbit
Reactivity	Human/Mouse/Rat

PRODUCT PROPERTIES

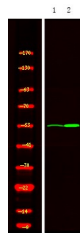
Clonality	Polyclonal
Clone ID	
Concentration	1 mg/mL
Conjugation	Unconjugated
Purification	The antibody was affinity-purified from rabbit serum by affinity-chromatography using specific immunogen.
Dilution Range	IHC-P 1:50-200
	WB 1:500-2000
	IF 1:50-200
Formulation	Liquid in PBS containing 50% Glycerol, 0.5% BSA and 0.02% Sodium Azide.
Isotype	IgG
Storage	Store at -20°C for up to 1 year from the date of receipt, and avoid repeat freeze-thaw cycles.
Instruction	

TARGET INFORMATION

Gene ID	5891
Gene Symbol	MOK
Uniprot ID	MOK_HUMAN
Immunogen	Synthesized peptide derived from the human MOK (Phospho-Tyr161)
Immunogen Region	
Specificity	This antibody detects endogenous phospho levels of MOK (Phospho-Tyr161) at Human:Y161, Mouse:Y161, Rat:Y161
Immunogen Sequence	



Immunohistochemical analysis of paraffin-embedded human tonsil. 1, Tris-EDTA, pH9.0 was used for antigen retrieval. 2 Antibody was diluted at 1:200 (4A°C overnight. 3, Secondary antibody was diluted at 1:200 (room temperature, 45min).



Western Blot analysis of 1 HeLa cell, 2 LPS 100ng/mL 30min treated, using primary antibody at 1:1000 dilution. Secondary antibody (STJS000791) was diluted at 1:10000

This product is suitable for in-vitro studies under the RESEARCH USE ONLY [RUO] licence. This product must not be used as for diagnostic or other medical purposes.
St John's Laboratory Ltd, Knowledge Dock Business Centre, University Way, London, E16 2RD | Tel: 0208 223 3081