

## Anti-SACS antibody (4291-4340 aa) (STJ192601)

STJ192601

### GENERAL INFORMATION

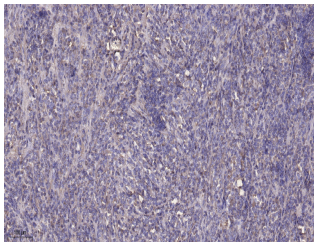
|                          |   |
|--------------------------|---|
| <b>Product Type</b>      | Primary antibodies  |
| <b>Short Description</b> | Rabbit polyclonal antibody anti-Sacs (4291-4340 aa) is suitable for use in Immunohistochemistry and Immunofluorescence research applications. |
| <b>Applications</b>      | IHC/IF  |
| <b>Host/Source</b>       | Rabbit  |
| <b>Reactivity</b>        | Human/Mouse   |

### PRODUCT PROPERTIES

|                       |   |
|-----------------------|---|
| <b>Clonality</b>      | Polyclonal  |
| <b>Clone ID</b>       |   |
| <b>Concentration</b>  | 1 mg/mL   |
| <b>Conjugation</b>    | Unconjugated  |
| <b>Purification</b>   | The antibody was affinity-purified from rabbit antiserum by affinity-chromatography using epitope-specific immunogen. |
| <b>Dilution Range</b> | IHC-P 1:50-300<br>IF 1:50-200   |
| <b>Formulation</b>    | Liquid in PBS containing 50% Glycerol and 0.02% Sodium Azide.   |
| <b>Isotype</b>        | IgG   |
| <b>Storage</b>        | Store at -20°C for up to 1 year from the date of receipt, and avoid repeat freeze-thaw cycles.                        |
| <b>Instruction</b>    |   |

### TARGET INFORMATION

|                           |  |
|---------------------------|--|
| <b>Gene ID</b>            | <a href="#">26278</a>  |
| <b>Gene Symbol</b>        | <a href="#">SACS</a>   |
| <b>Uniprot ID</b>         | <a href="#">SACS_HUMAN</a>   |
| <b>Immunogen</b>          | Synthesized peptide derived from the human protein at the amino acid range 4291-4340 |
| <b>Immunogen Region</b>   | 4291-4340 aa   |
| <b>Specificity</b>        | SACS Polyclonal Antibody detects endogenous levels of protein.                       |
| <b>Immunogen Sequence</b> |  |



Immunohistochemical analysis of paraffin-embedded human Colon cancer. 1. Antibody was diluted at 1:200 (4A°C overnight). 2. Tris-EDTA, pH9.0 was used for antigen retrieval. 3. Secondary antibody was diluted at 1:200 (room temperature, 45min).

This product is suitable for in-vitro studies under the RESEARCH USE ONLY [RUO] licence. This product must not be used as for diagnostic or other medical purposes.  
St John's Laboratory Ltd, Knowledge Dock Business Centre, University Way, London, E16 2RD | Tel: 0208 223 3081