

## Anti-PTPRM antibody (21-61 aa) (STJ192216)

STJ192216

### GENERAL INFORMATION

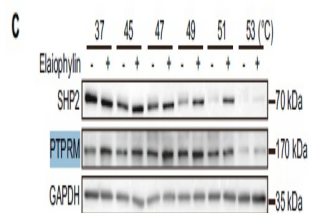
<b>Product Type</b>	Primary antibodies
<b>Short Description</b>	Rabbit polyclonal antibody anti-Receptor-type tyrosine-protein phosphatase mu (21-61 aa) is suitable for use in Western Blot and ELISA research applications.
<b>Applications</b>	WB/ELISA
<b>Host/Source</b>	Rabbit
<b>Reactivity</b>	Human/Mouse

### PRODUCT PROPERTIES

<b>Clonality</b>	Polyclonal
<b>Clone ID</b>	
<b>Concentration</b>	1 mg/mL
<b>Conjugation</b>	Unconjugated
<b>Purification</b>	The antibody was affinity-purified from rabbit antiserum by affinity-chromatography using epitope-specific immunogen.
<b>Dilution Range</b>	WB 1:500-2000 ELISA 1:5000-20000
<b>Formulation</b>	Liquid in PBS containing 50% Glycerol and 0.02% Sodium Azide.
<b>Isotype</b>	IgG
<b>Storage</b>	Store at -20°C for up to 1 year from the date of receipt, and avoid repeat freeze-thaw cycles.
<b>Instruction</b>	

### TARGET INFORMATION

<b>Gene ID</b>	5797
<b>Gene Symbol</b>	PTPRM
<b>Uniprot ID</b>	PTPRM_HUMAN
<b>Immunogen</b>	Synthesized peptide derived from part of the human protein at the amino acid range 21-61
<b>Immunogen Region</b>	21-61 aa
<b>Specificity</b>	PTPRM Polyclonal Antibody detects endogenous levels of protein.
<b>Immunogen Sequence</b>	



Elaiophyllin triggers paraptosis and preferentially kills ovarian cancer drug-resistant cells by inducing MAPK hyperactivation. Signal Transduction and Targeted Therapy Yong Fang WB Human